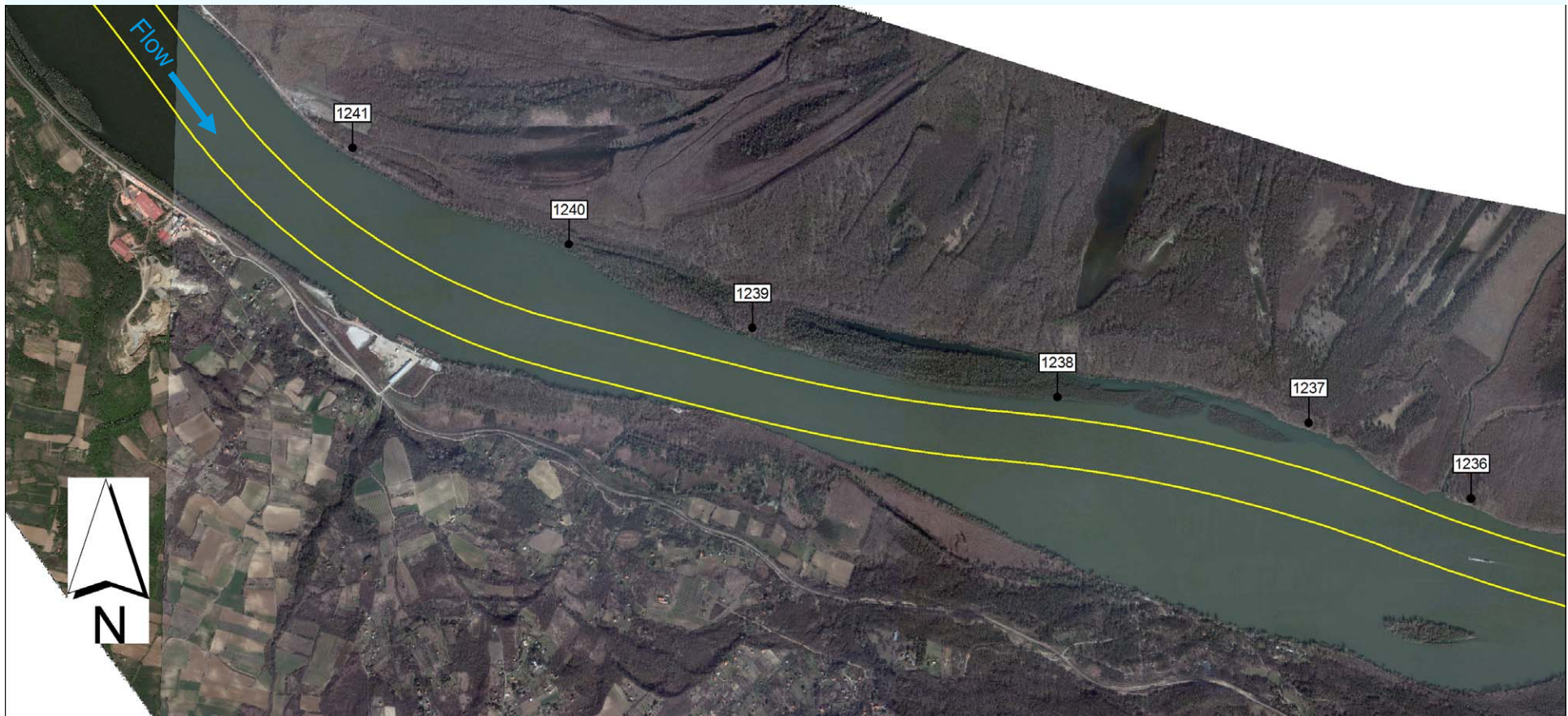


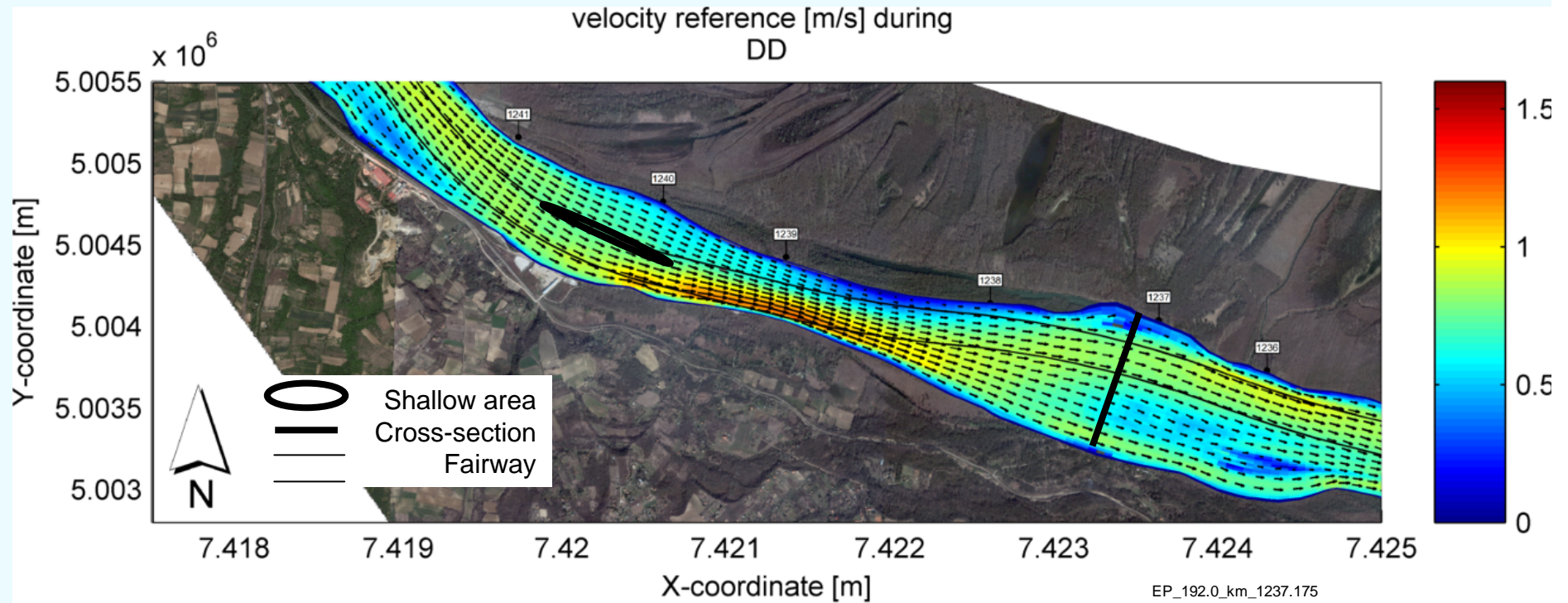
## 22. Sector – Cortanovci (km 1,241.6 – 1,235.0)



## 22. Cortanovci – Existing situation

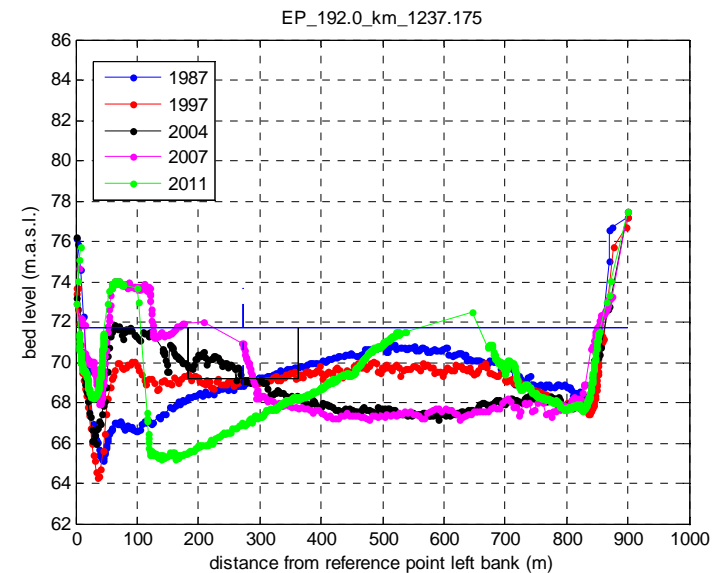


# 22. Cortanovci – Existing situation

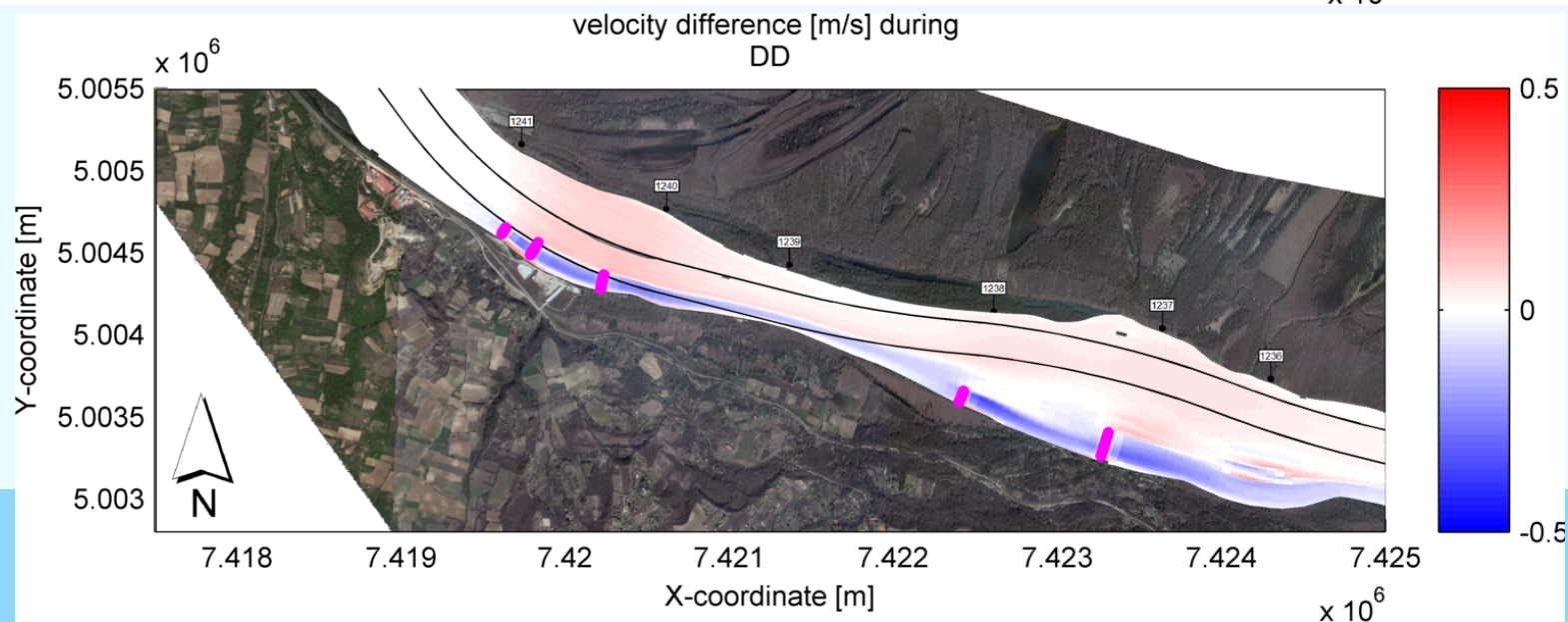
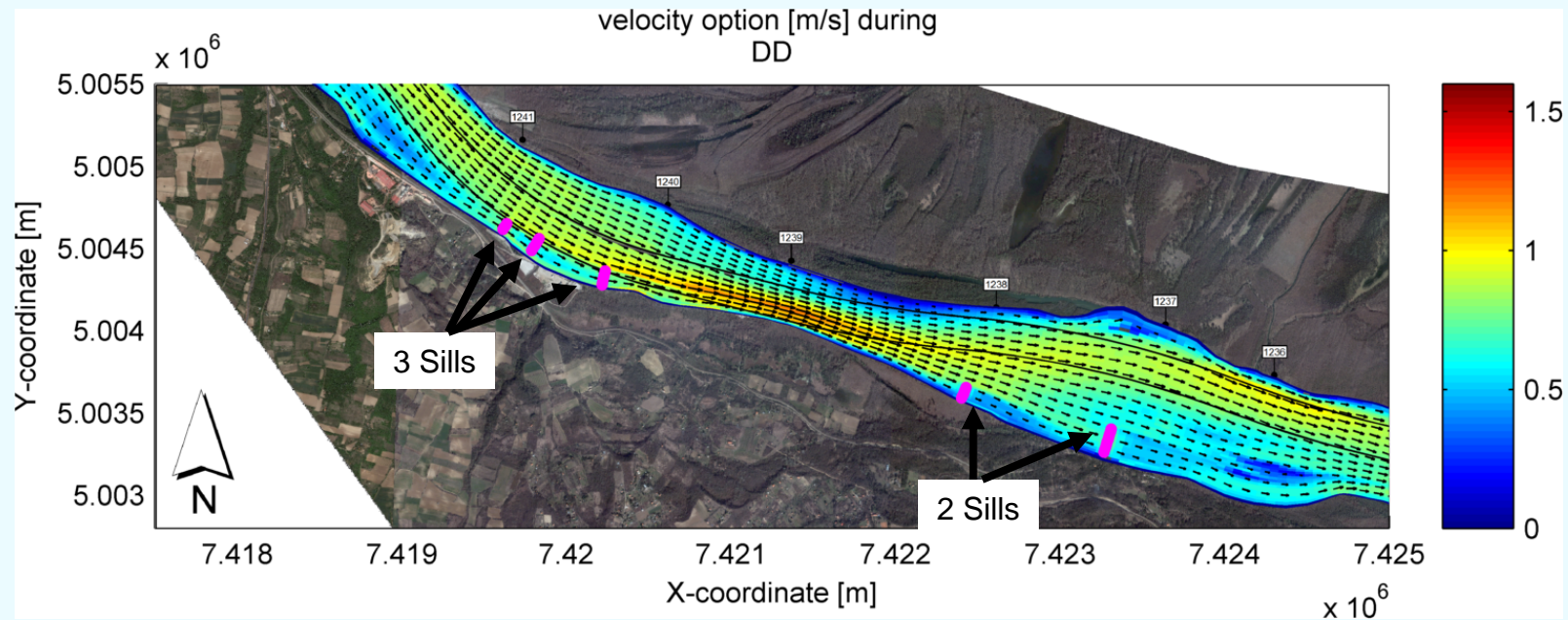


Navigation problems:

- Upstream: narrow fairway in the bend due to point bar
- Downstream: unstable river bed

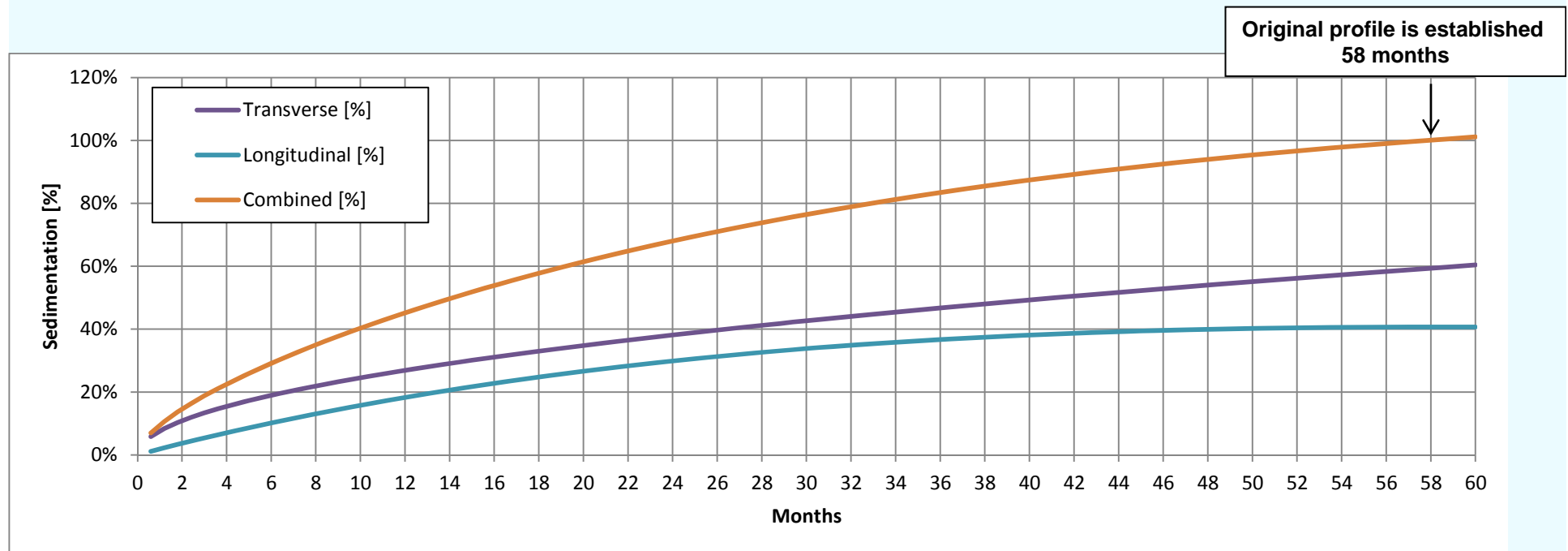


# 22. Cortanovci – option 1: Sills

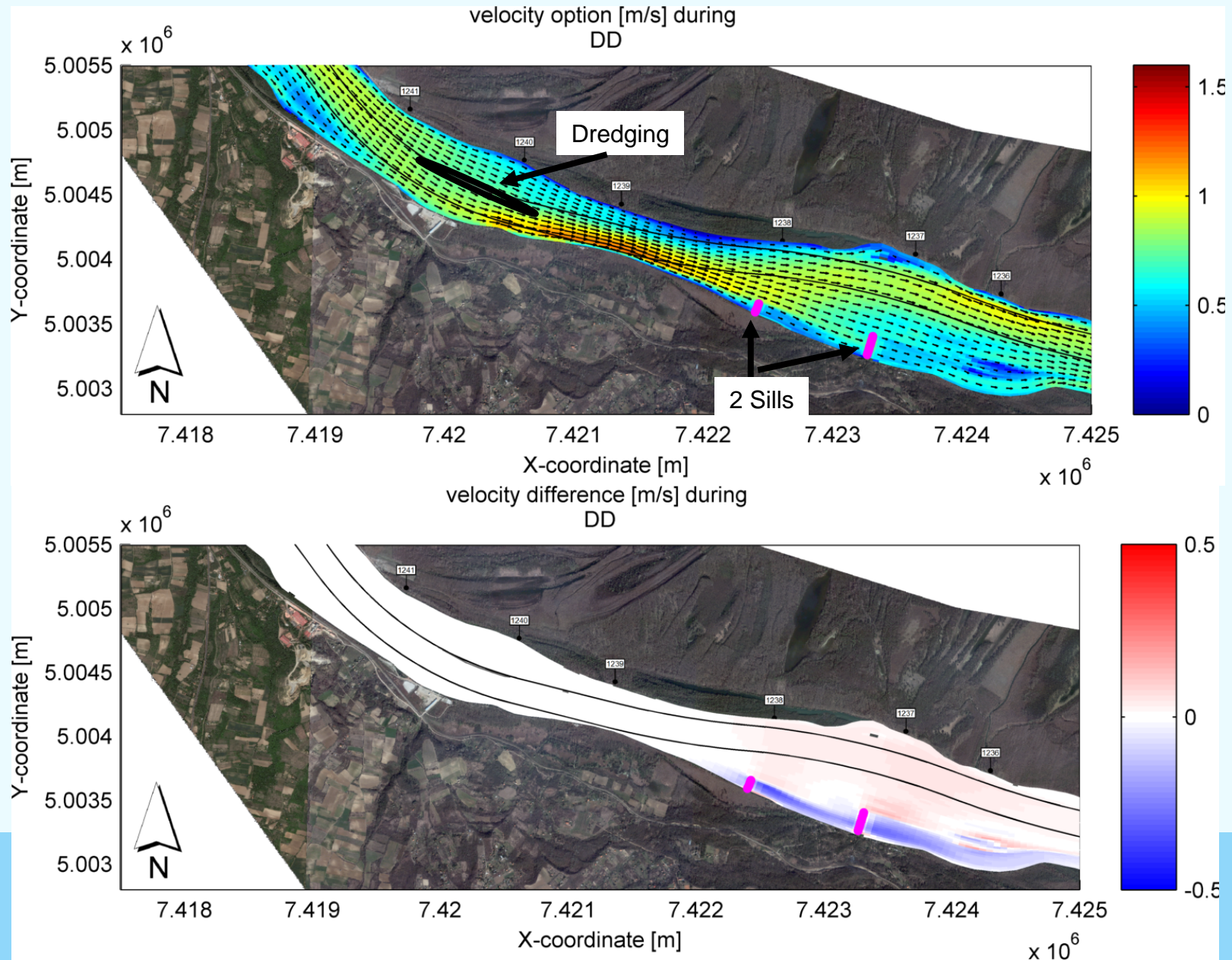


## 22. Cortanovci – option 2: Dredging

- Km 1239.4-1240.4 : 68,901 m<sup>3</sup>



# 22. Cortanovci – option 4: dredging+sills



## 22. Cortanovci – options 1, 2 and 4

- Navigation:
  - increased flow in the fairway channel;
  - additional dredging is required.
- Environment:
  - Upstream small part of point bar is eroded;
  - Preserved river dynamics in the sector.
- Cost:
  - Upstream: sills are about 50-100 m wide and 3 m high;
  - Downstream: sills are 70 m and 150 m wide and 2 m high
- Optimization of:
  - Sill crest level;
  - Exact location of structures.

## 22. Cortanovci - MCA

Options	Effectiveness	Environment	Cost
Option 1 – sills	Limited	Limited	Limited
Option 2 – dredging	Low	Limited	Limited
Option 4 – dredging + two sills	Limited/low	Limited	Limited/low