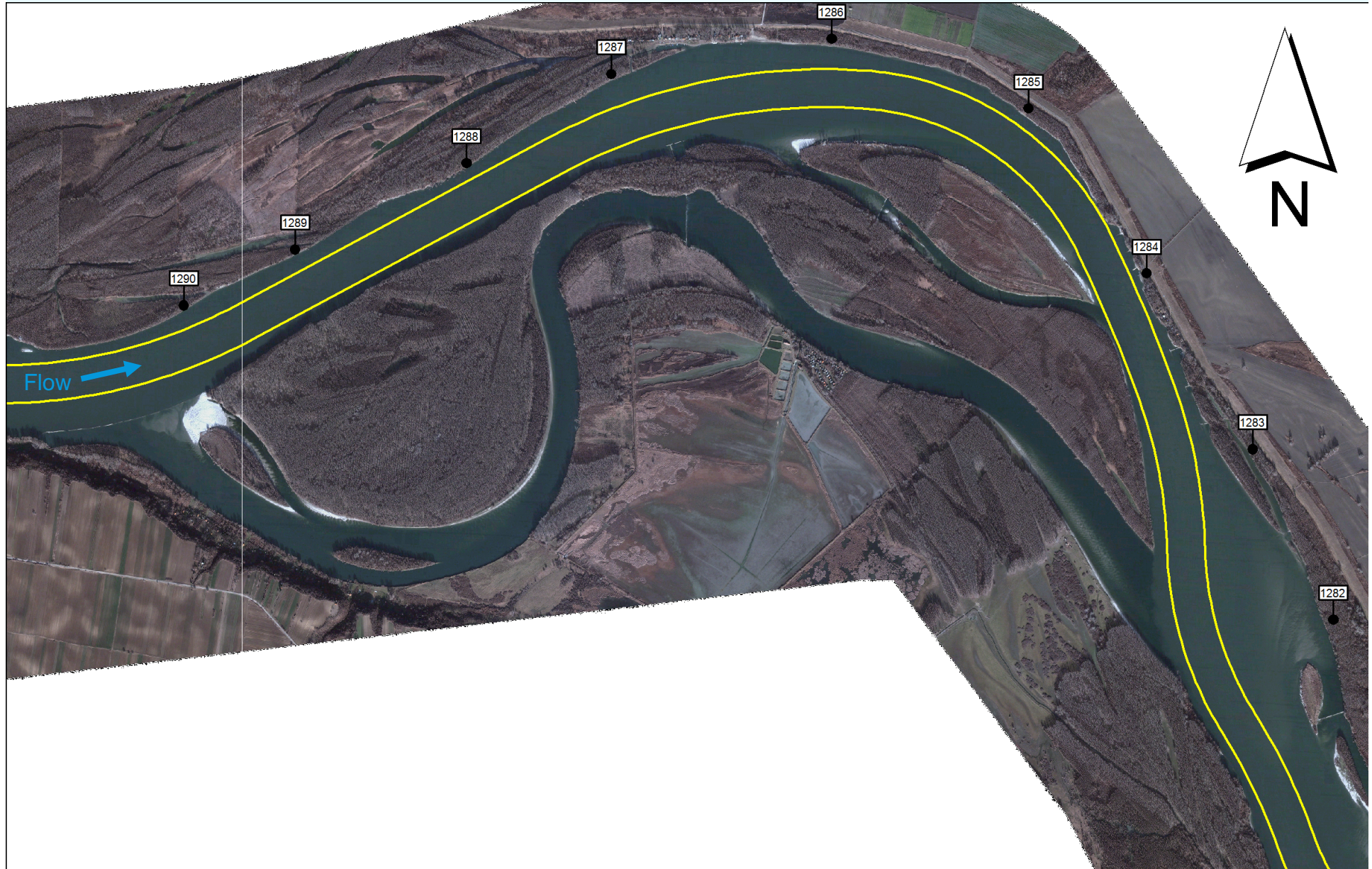


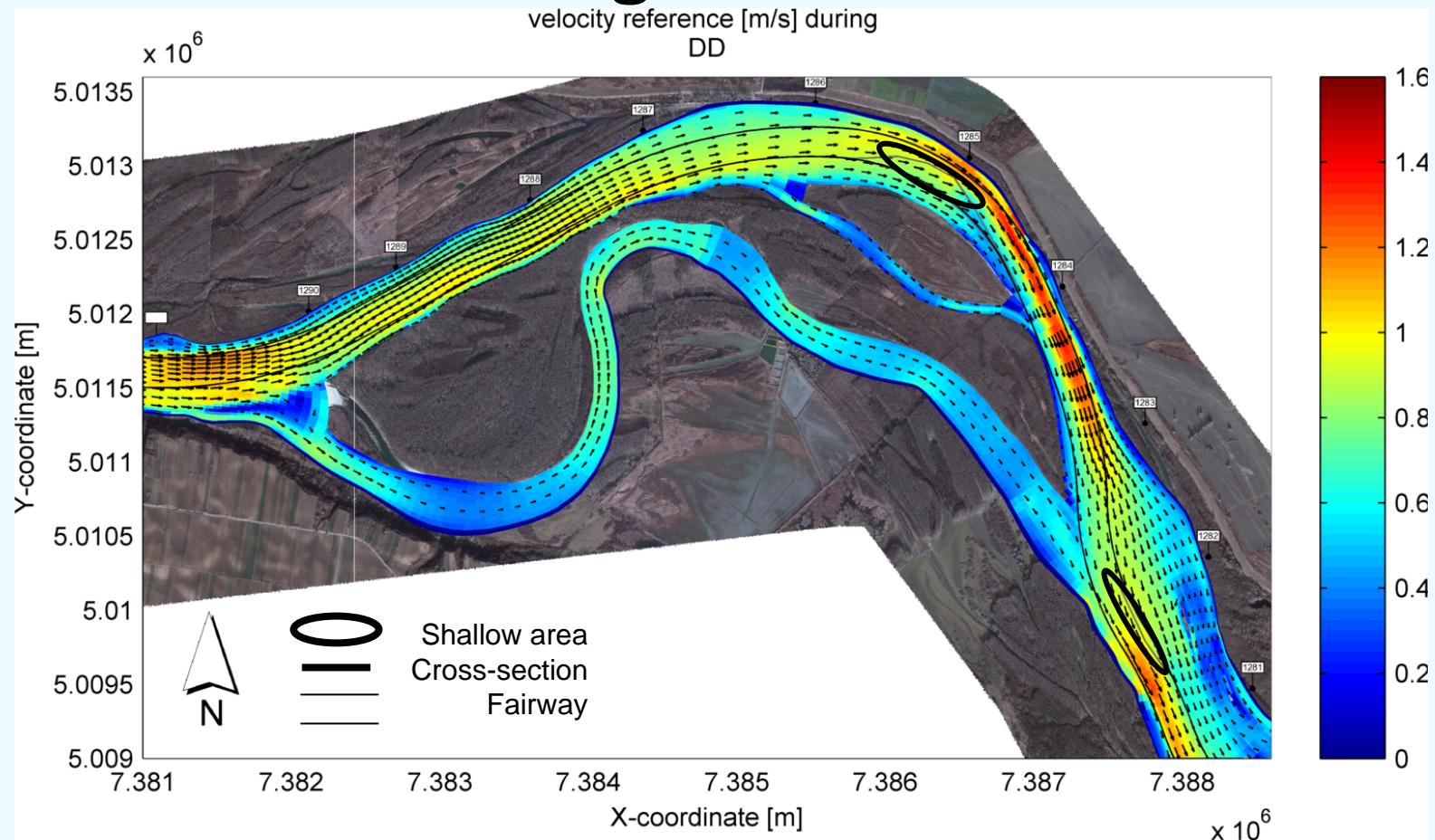
18. Sector – Susek (km 1,287-1,281)



18. Susek – Existing situation



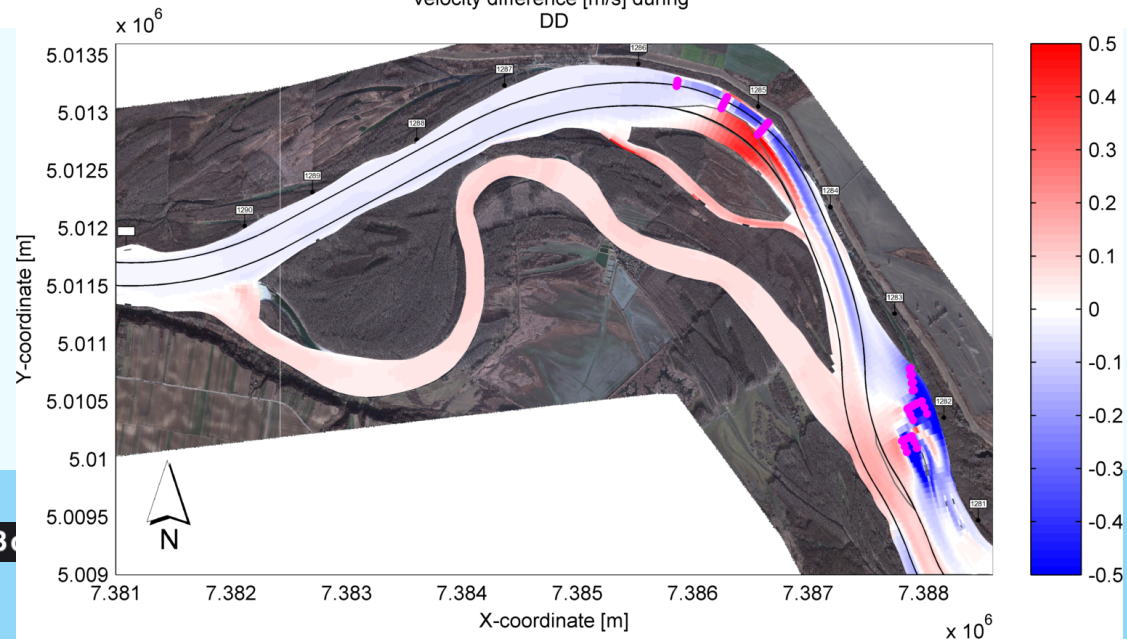
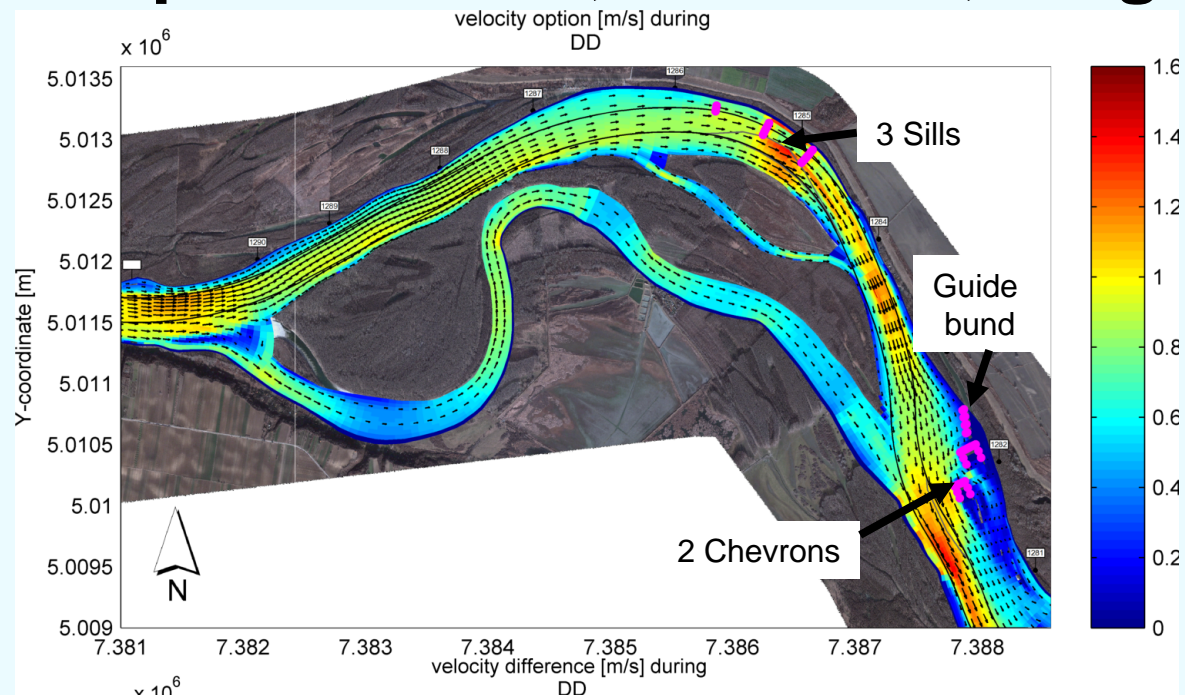
18. Susek - Existing situation



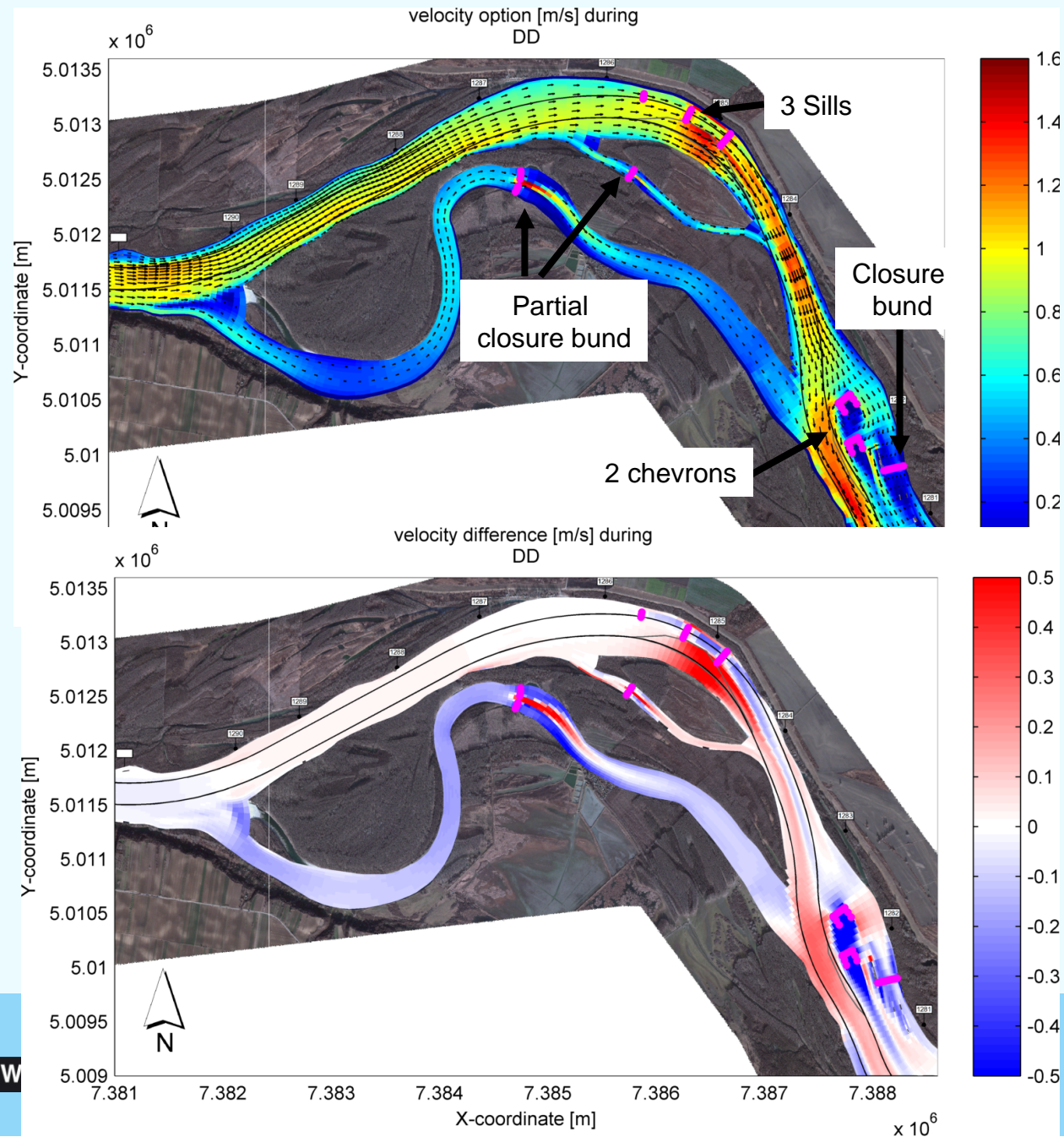
Navigation problems:

- Upstream: bar protrudes into fairway along right side of fairway;
- Downstream: river is wide, sand bar is in fairway

18. Susek - option 3: sills, chevrons, long. dike



18. Susek - option 4: sills, chevrons, closure bunds



18. Susek– options 3 and 4

- Navigation:
 - Increased flow in the fairway channel.
- Environment:
 - Flow in side channels is maintained.
- Cost:
 - Chevrons are about 140 m wide and 2-3 m high;
 - Sills are 70 - 150 m wide and 4-5 m high;
- Optimization of:
 - Crest levels of structures;
 - Exact location of structures;
 - Flow openings in closure bunds.

18. Susek - MCA

Options	Effectiveness	Environment	Cost
Option 3 – sills, guide bund, chevrons	Limited	Minimal negative (+ some positive) impact	High
Option 4 – sills, closure bund, chevrons	Effective	Limited	High

Thank you for your kind attention

