



**“Preparation of Documentation for River Training and Dredging Works
on Critical Sectors on the Danube River in Serbia”**

Stakeholders’ Forum

**River restoration within an integrative river engineering project –
what could be the role of protected areas?**

Mag. Ivan Mitrovic
Directorate for Inland Waterways



Project funded by
the European Union

Danubeparks Step 2.0, Task Force Meeting
River Morphology, Bratislava, 23-01-2013

Content

Strategic and legal framework

Basic project data

Critical sectors

Range of the project

Stakeholders' Forum

Availability of data

Basic orientation

Next steps



Project funded by
the European Union

Directorate for Inland Waterways
Bratislava, 23-01-2013

Plovput

Strategic and legal framework

Strategic framework:

- Master plan for IWW transport in Serbia(2006)
- Serbian transport development strategy for the period 2008-2015 (2007)
- General transport master plan (2009)
- Spatial plan of the corridor VII (drafted)
- EU strategy for the Danube region (2010)

Inland navigation:

- DC Recommendations
- AGN (UNECE)
- SRB-CRO bilateral agreement on inland navigation and fairway maintenance (2009)
- Law on navigation and ports on inland waterways (2010)
- Bylaws

Water management:

- Law on waters
- Relevant bylaws
- WFD (EU)
- Danube Protection Convention
- Danube River Basin management plan (ICPDR)

Protection of cultural monuments

- Law on cultural heritage
- Bylaws

Environment:

- ESPOO convention
- Law on nature protection
- Law on environment protection
- Law on EIA
- Law on SEA
- Regulation on ecological network
- Specific spatial plans
- Bylaws

Law on construction and spatial planning



Project funded by
the European Union

Directorate for Inland Waterways
Bratislava, 23-01-2013

Plovput

Basic project data

- EU funding programme: IPA 2010
- EU funding rate: 100%
- Value: EUR 2.2 Mill
- Timeframe: 2011-2013
- Beneficiaries:
 - Ministry of Transport
 - Directorate for Inland Waterways
- **Goal: Ensure minimum sustainable depth and width of the fairway during the low water periods**
- **Measure: the best combination of structural and non-structural options**



Towards a Smoother Inland Navigation



Preparation of Necessary Documentation
for River Training Works on Selected Locations
along the Danube River
(IPA 2010)



Plovput



Project funded by
the European Union

Directorate for Inland Waterways
Bratislava, 23-01-2013

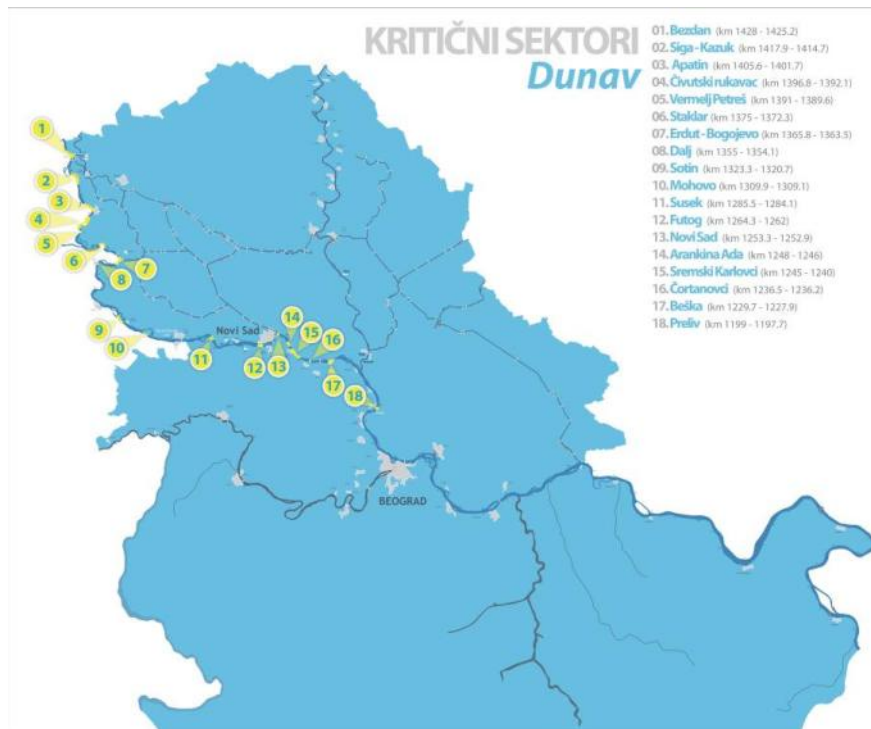
Plovput

Critical sectors

Master Plan (2006)
18 critical sectors
40 km total length



IPA 2010 project (2011)
24 critical sectors
70 km total length



Project funded by
the European Union

Directorate for Inland Waterways
Bratislava, 23-01-2013



Range of the Project

- hydraulic models (1D and 2D)
- Feasibility study and conceptual designs for all critical sectors
- CBA
- EIA
- Morphological models
- main designs and tender documentation for works and supervision & monitoring on **6 critical sectors**
- Documentation is being prepared in accordance to **national** legislation, as well as **EU** legislation

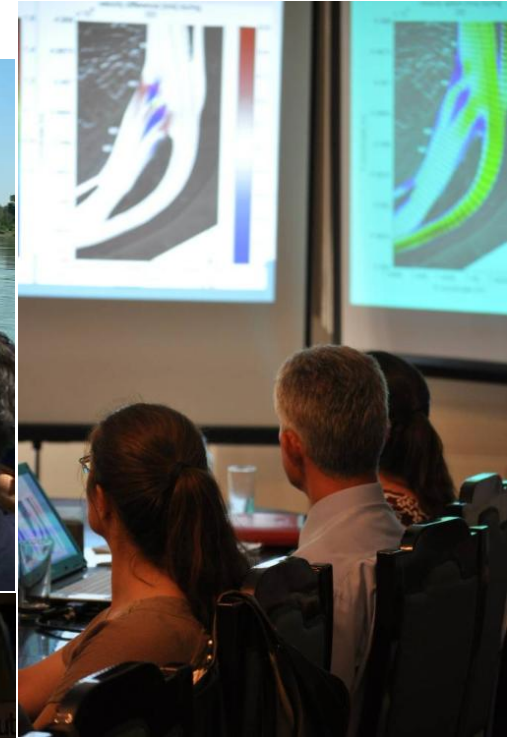


Project funded by
the European Union

Directorate for Inland Waterways
Bratislava, 23-01-2013

Plovput

Stakeholders' Forum



Project funded by
the European Union

Directorate for Inland Waterways
Bratislava, 23-01-2013



Forum members

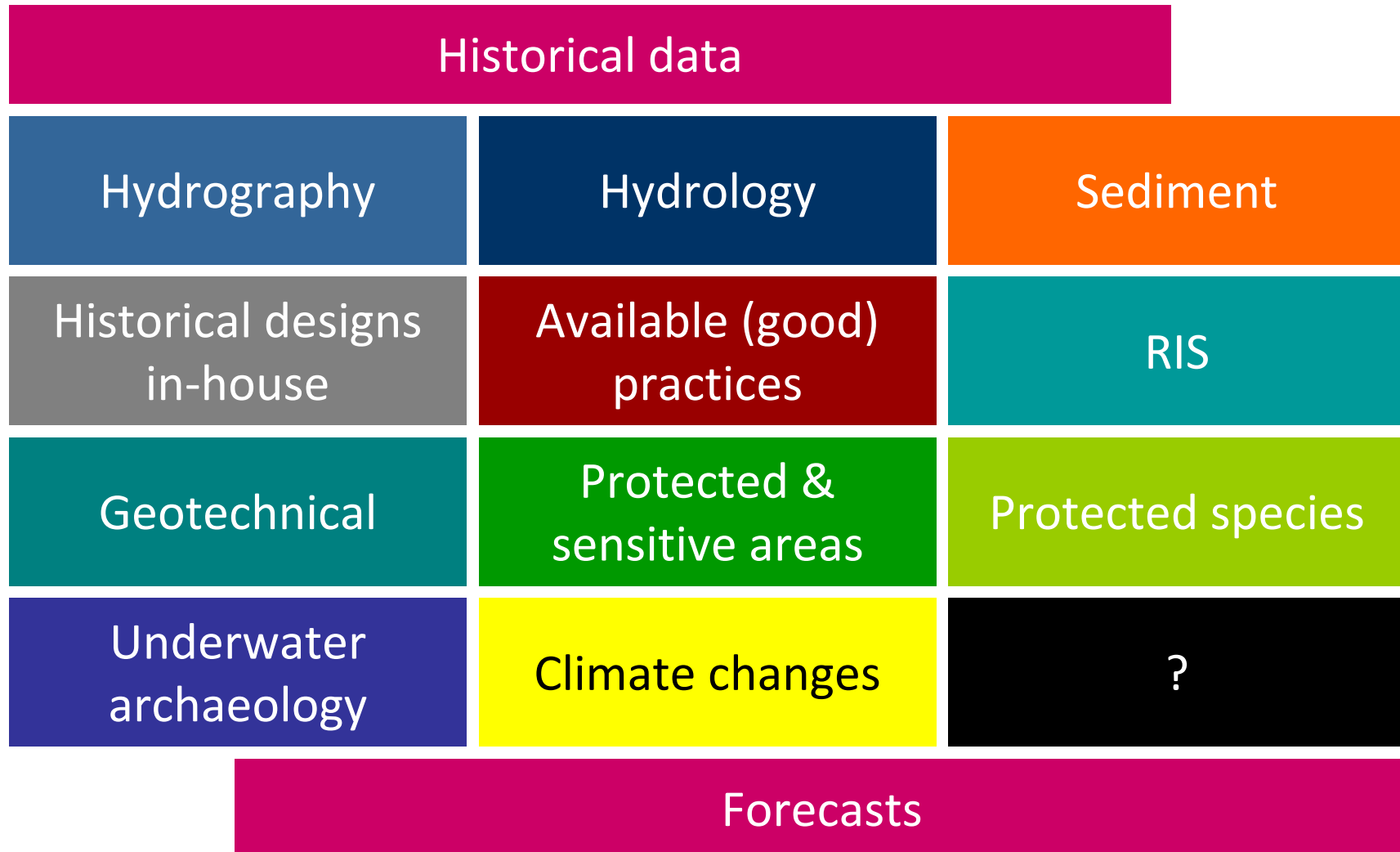


Project funded by
the European Union

Directorate for Inland Waterways
Bratislava, 23-01-2013

Plovput

Availability of data



Project funded by
the European Union

Directorate for Inland Waterways
Bratislava, 23-01-2013

Plovput

Availability of data

Jan 2013

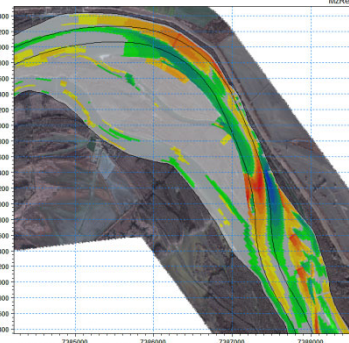
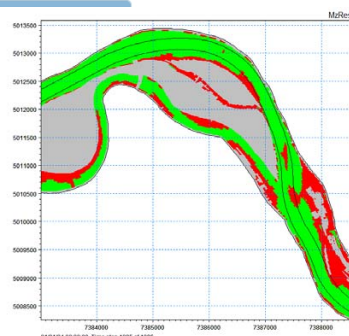
Mo	Tu	We	Th	Fr	Sa	Su
1	2	3	4	5	6	
7	8	9	10	11	12	13
14	15	16	17	18	19	20
21	22	23	24	25	26	27
28	29	30	31			

Today

Hen RSS SHMZ

Dnevni hidrološki izveštaj za 22.Jan.2013

En	0	Vodomer	18	19	20	21	22	23	24	25	26	Q
10	80.64	Bezdan	311	282	261	249	231	205	182	173	155	2,580
87	78.84	Apatin	400	368	342	327	308	286	263			
84	77.46	Bogojevo	375	344	317	299	284	265	242	220	210	3,130
96	73.97	Bačka Palanka	375	348	324	308	298	287	279			
80	71.73	Novi Sad	358	332	312	298	288	278	269			
142	69.68	Slankamen	356	348	340	338	334					
223	67.87	Zemun	389	386	392	396	388	388	382	376	373	
261	67.33	Pančevo	390	388	395	400	392	393	387	376	379	
434	65.36	Smederevo	522	518	536	538	528					5,840
665	62.85	Banatska Palanka	711	709	727	735	713					
670	62.17	Veliko Gradište	765	760	775	785	780					
29.00		Prahovo	370	260	340	305						
72.76		Jamena	616	640	640	622	620					1,630
37	72.22	Sremska Mitrovica	358	375	393	382	376	385	415	490	550	2,110
-64	72.61	Sabac	223	245	257	250	240	245	260	320	375	
162	68.28	Beograd	338	337	343	347	340	340	335	330	328	
50	73.57	Novi Kneževac	154	158	169	176	177	177	177	177		
125	72.80	Senta	225	225	231	239	239	239	239	239		494
213	71.87	Novi Bečej	305	305	305	305	305					
133	69.70	Titel	346	337	333	332	326	319	308			



active database: MySQL bazaprola

Id_zaglavlje = 32318 Id_profil = 1 Broj tacaka = 329 Vreme = 177ms

Reluk: Dunav

Vrsta deonice: 304 Evidencioni profil (EP)

Deonica: 247 Kontrolni profil (KP)

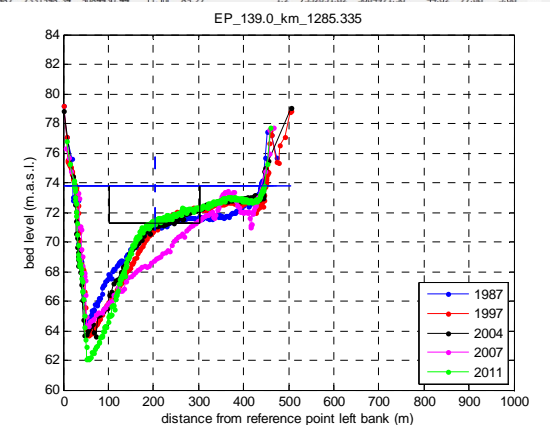
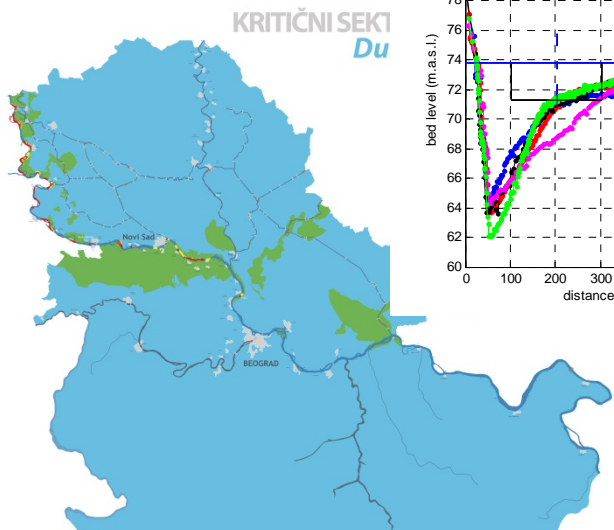
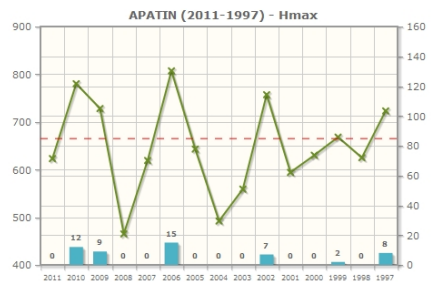
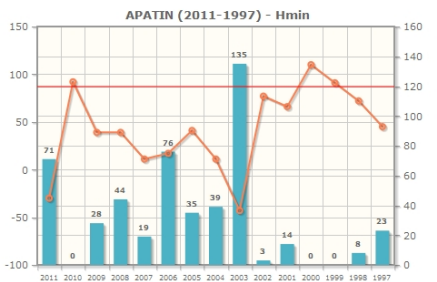
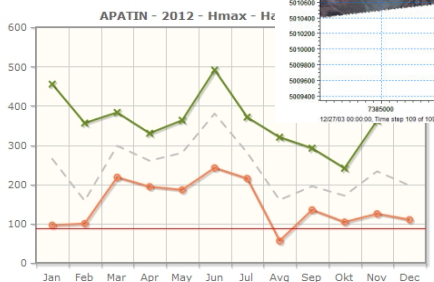
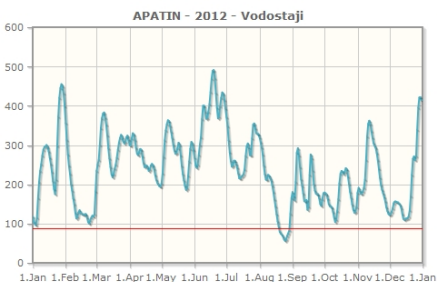
Dunav: 375 Profila plicaka (PL)

Uzvodna KM: 1433.000 Nizvodna KM: 845.500

Narudnica: 2107 Novi profila plicaka (NO)

Godina snimanja: 1987, 1997, 2004, 2007, 2011

LB	DB	L	E	N	GOD	E	N	DAN	RN	M	d	E	N	D	Z	Hen
1	2	499.96	7332096.37	5084974.33	2011	7331598.34	5084930.44	13	Aug	83.96	0.0	7332060.48	5084972.04	26.00	84.04	-3.08
1	2	499.96	7332096.37	5084974.33	2008	7331598.34	5084930.44	22	Aug	84.23	0.0	7332064.49	5084971.52	32.00	82.44	-1.48
1	2	499.96	7332096.37	5084974.33	2007	7331598.34	5084930.44	10	Nov	81.67	2.4	7332061.41	5084968.85	35.31	81.78	-0.82
1	2	499.96	7332096.37	5084974.33	2004	7331598.34	5084930.44	4	Dec	81.74	2.3	7332060.39	5084968.86	36.32	81.55	-0.59
1	2	499.96	7332096.37	5084974.33	1997	7331598.34	5084930.44	5	May	83.71	2.2	7332059.35	5084968.86	37.36	81.24	-0.28
1	2	499.96	7332096.37	5084974.33	1996	7331598.34	5084930.44	1	Jun	82.28	2.1	7332058.07	5084968.86	38.63	80.86	0.10
1	2	499.96	7332096.37	5084974.33	1995	7331598.34	5084930.44	4	Nov	81.01	2.0	7332058.68	5084968.87	39.82	80.34	0.62
1	2	499.96	7332096.37	5084974.33	1994	7331598.34	5084930.44	24	Jul	81.89	1.7	7332055.45	5084968.97	41.23	79.50	1.46
1	2	499.96	7332096.37	5084974.33	1990	7331598.34	5084930.44	26	May	82.35	1.0	7332054.47	5084969.66	42.15	78.99	1.97
1	2	499.96	7332096.37	5084974.33	1989	7331598.34	5084930.44	17	May	83.24	0.3	7332055.59	5084970.30	42.97	78.68	2.28
1	2	499.96	7332096.37	5084974.33	1988	7331598.34	5084930.44	17	Jun	84.37	0.4	7332052.71	5084970.93	43.79	78.41	2.55
1	2	499.96	7332096.37	5084974.33	1987	7331598.34	5084930.44	11	Jul	84.57	1.2	7332051.82	5084971.56	44.62	77.88	3.08



Project funded by the European Union

Directorate for Inland Waterways
Bratislava, 23-01-2013



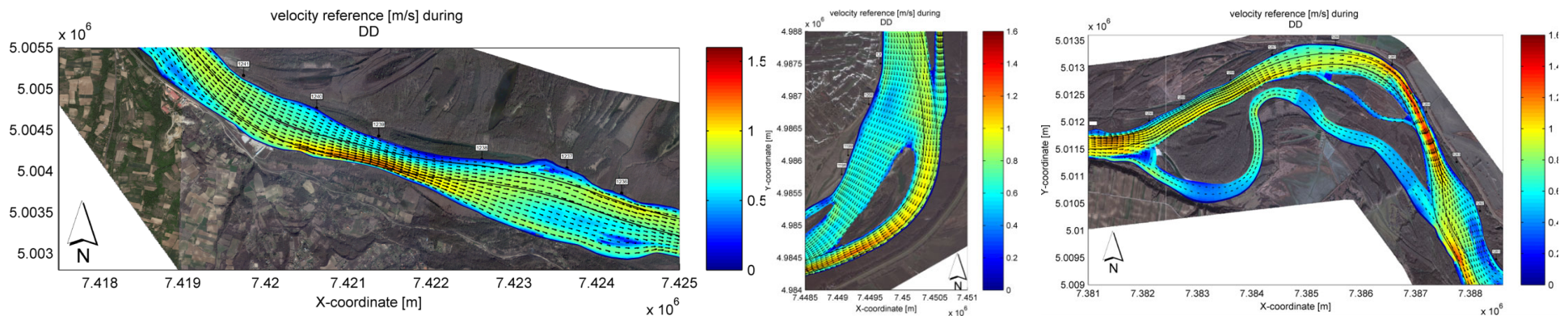
Basic project orientation

**Preserving
connectivity conditions**

**Preferring
detached structures**

**Preserving
sediment equilibrium**

**Ensuring
mitigation measures**

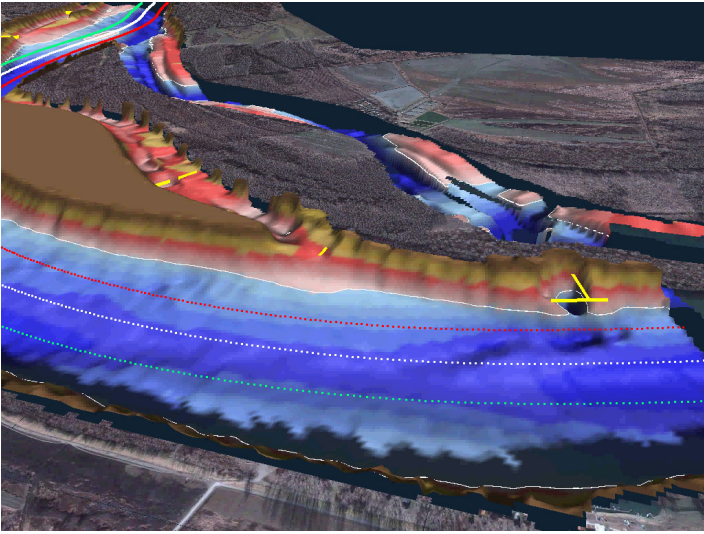
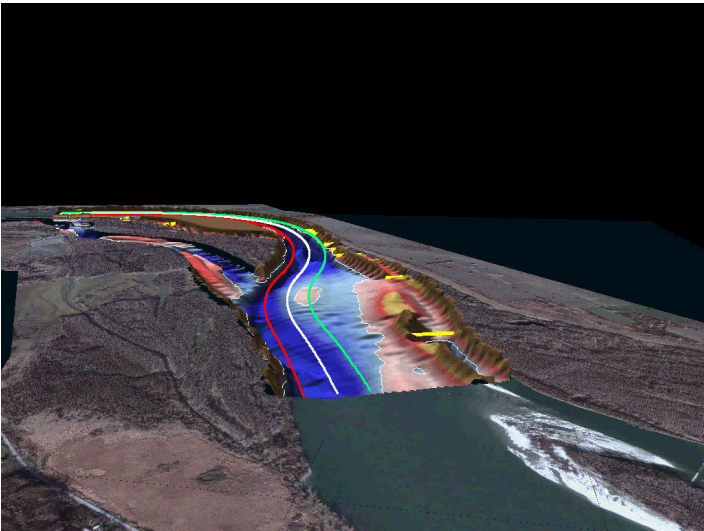
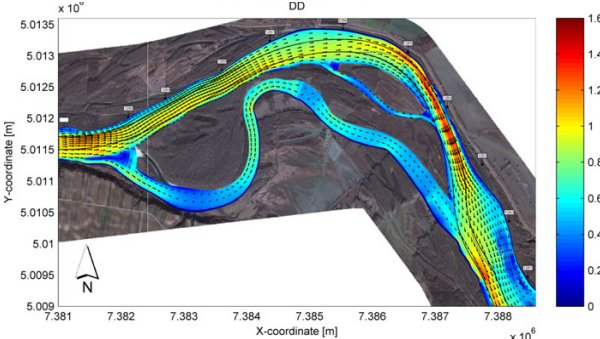


Project funded by
the European Union

Directorate for Inland Waterways
Bratislava, 23-01-2013

Plovput

Preserving connectivity conditions

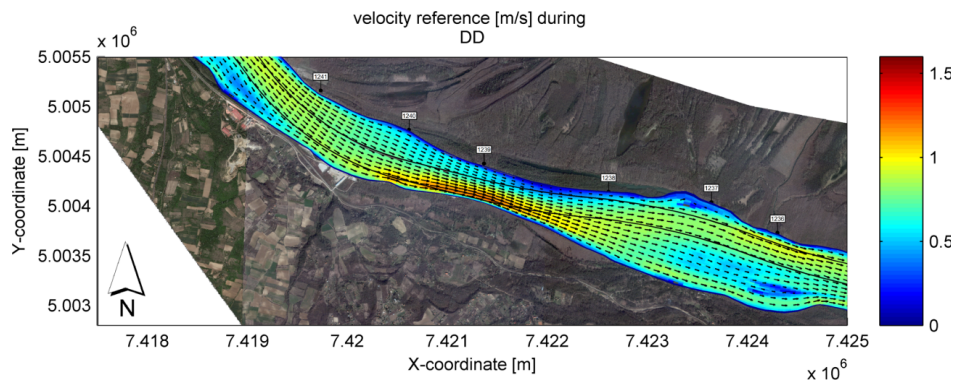
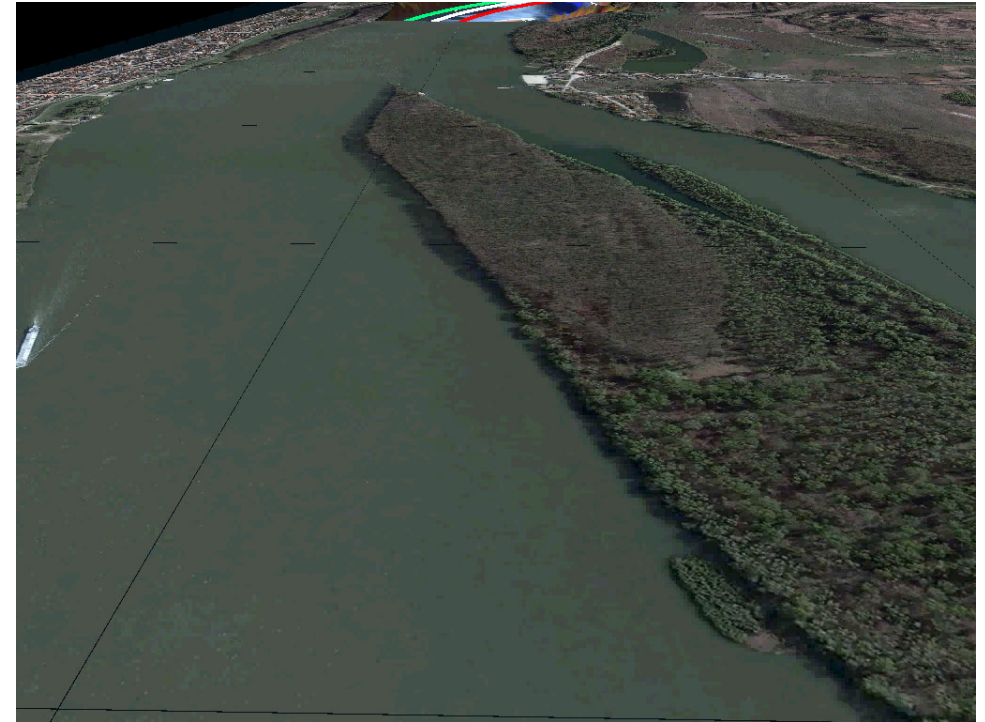


Project funded by the European Union

Directorate for Inland Waterways
Bratislava, 23-01-2013



Preserving sediment equilibrium

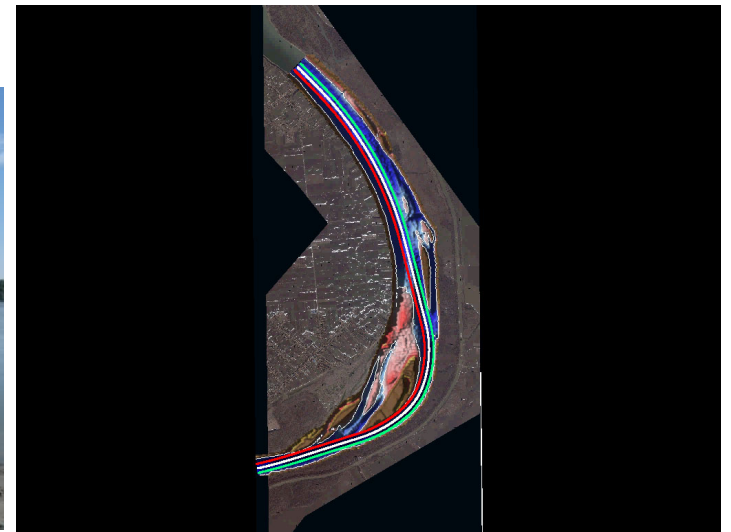
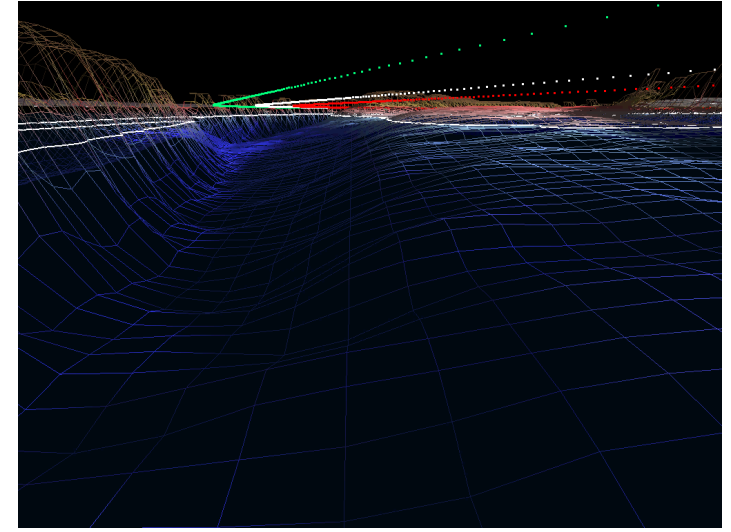
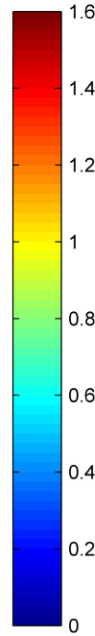
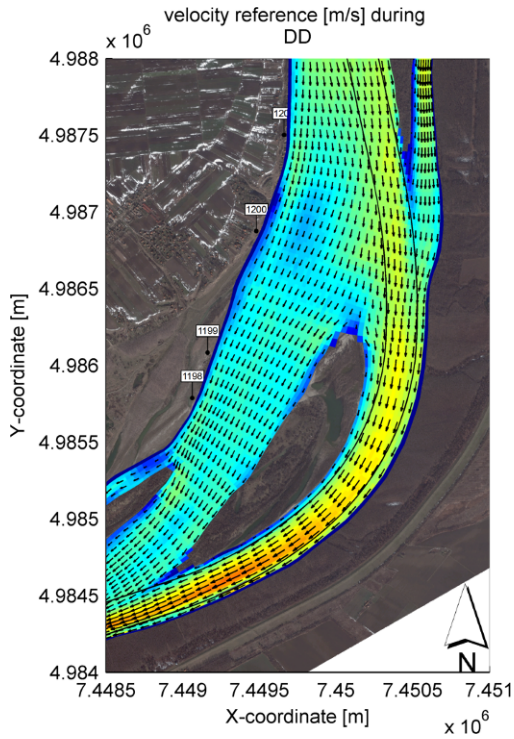


Project funded by
the European Union

Directorate for Inland Waterways
Bratislava, 23-01-2013



Preferring detached structures



Project funded by
the European Union

Directorate for Inland Waterways
Bratislava, 23-01-2013

Plovput

Next steps

Time perspective 2014-2016

- works on 6 critical sectors for which main designs and tender documentation are being prepared
- Technical supervision of works and monitoring of effects



Project funded by
the European Union

Directorate for Inland Waterways
Bratislava, 23-01-2013

Plovput

The screenshot shows the Plovput website interface. At the top, there are language selection buttons for Serbian, Croatian, English, and French. The main header includes the Plovput logo and the text 'Republika Srbija' and 'Direktorat za vodene putove'. A navigation menu on the left lists various sections like 'Naslovna', 'Kontakt', 'O nama', 'Aktivnosti', 'Međunarodne aktivnosti', 'Projekti', 'Istraživanja', 'Projekat', 'Medija centar', and 'Lokacije'. The main content area features a large image of a meeting in progress, with several people seated around a table, looking at multiple computer monitors displaying data and maps. Below the image is a table with links in Serbian and English:

Српски	English
Opšta pravila organizacije i rada Forum	General rules on organization and work of the Forum
Forum projekta	Project flyer

On the right side, there is a search bar and a list of services: 'Документа', 'Информатор', 'Фото галерија', 'Newsletter', and 'Notices to Skippers'. Below these are logos for 'Forum', 'NEWADA 1.0', 'co-wanda', and 'Програм опремања' (Equipment Program) with the European Union flag.

For more info

www.plovput.rs



Project funded by the European Union

Directorate for Inland Waterways
Bratislava, 23-01-2013



Summary

Strategic and legal framework

Basic project data

Critical sectors

Range of the project

Stakeholders' Forum

Availability of data

Basic orientation

Next steps



Project funded by
the European Union

Directorate for Inland Waterways
Bratislava, 23-01-2013

Plovput



**“Preparation of Documentation for River Training and Dredging Works
on Critical Sectors on the Danube River in Serbia”**

**Thank you
for your kind attention**

Mag. Ivan Mitrovic
Directorate for Inland Waterways



Project funded by
the European Union

Danubeparks Step 2.0, Task Force Meeting
River Morphology, Bratislava, 23-01-2013