



**“Preparation of Documentation for River Training and Dredging Works  
on Critical Sectors on the Danube River in Serbia”**

# **Introduction to the Project**

**Zaneta Ostojic Barjaktarevic**  
Directorate for Inland Waterways



Project funded by  
the European Union

**Joint Statement 4<sup>th</sup> Workshop**  
Budapest, 17-09-2012

# Content

Strategic and legal framework

Basic project data

Critical sectors

Range of the project

Basic orientation

Dissemination

Stakeholders' Forum

Next steps



Project funded by  
the European Union

Directorate for Inland Waterways  
Budapest, 17-09-2012

Plovput

# Strategic and legal framework

## Strategic framework:

- Master plan for IWW transport in Serbia(2006)
- Serbian transport development strategy for the period 2008-2015 (2007)
- General transport master plan (2009)
- Spatial plan of the corridor VII (drafted)
- EU strategy for the Danube region (2010)

## Inland navigation:

- DC Recommendations
- AGN (UNECE)
- SRB-CRO bilateral agreement on inland navigation and fairway maintenance (2009)
- Law on navigation and ports on inland waterways (2010)
- Bylaws

## Water management:

- Law on waters
- Relevant bylaws
- WFD (EU)
- Danube Protection Convention
- Danube River Basin management plan (ICPDR)

## Protection of cultural monuments

- Law on cultural heritage
- Bylaws

## Environment:

- ESPOO convention
- Law on nature protection
- Law on environment protection
- Law on EIA
- Law on SEA
- Regulation on ecological network
- Specific spatial plans
- Relevant bylaws

Law on construction and spatial planning



Project funded by  
the European Union

Directorate for Inland Waterways  
Budapest, 17-09-2012

Plovput

# Basic project data

- EU funding programme: IPA 2010
- EU funding rate: 100%
- Value: EUR 2.1 Mill
- Timeframe: 2011-2013
- Beneficiaries:
  - Ministry of Transport
  - Directorate for Inland Waterways
- **Goal: Ensure sustainable minimum depth and width for low water periods**
- **Measure: the best combination of structural and non-structural options**



## Towards a Smoother Inland Navigation



Preparation of Necessary Documentation  
for River Training Works on Selected Locations  
along the Danube River  
(IPA 2010)



Plovput



Project funded by  
the European Union

Directorate for Inland Waterways  
Budapest, 17-09-2012

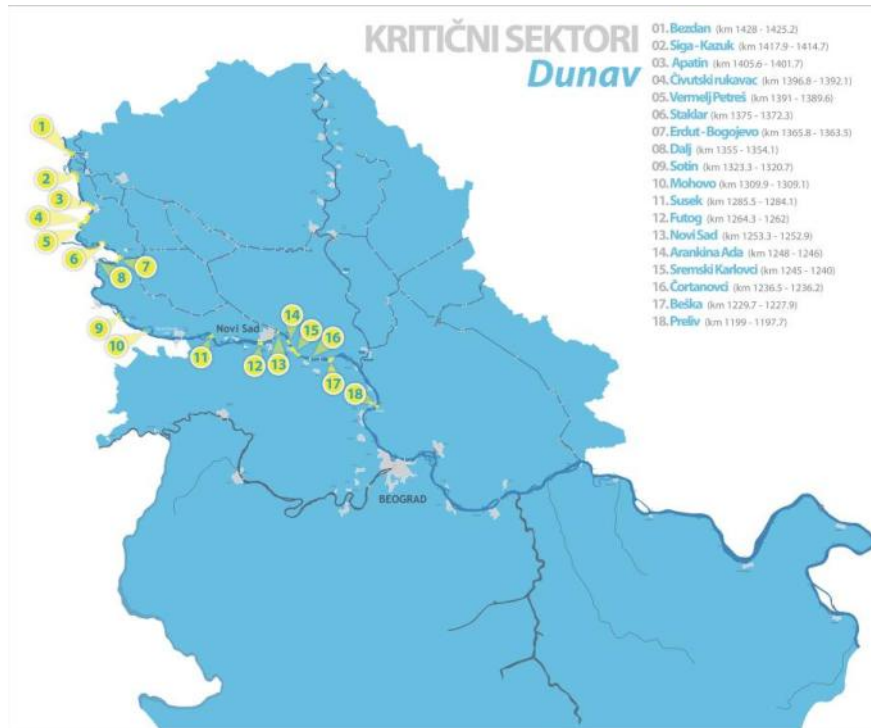
Plovput

# Critical sectors

Master Plan (2006)  
**18** critical sectors  
**40** km total length



IPA 2010 project (2011)  
**24** critical sectors  
**70** km total length



Project funded by  
the European Union

Directorate for Inland Waterways  
Budapest, 17-09-2012

Plovput

# Range of the Project

- hydraulic models (1D and 2D)
- Feasibility study and conceptual designs for all critical sectors
- CBA
- EIA
- main designs and tender documentation for works and supervision and monitoring on **6 critical sectors**
- Documentation is being prepared in accordance to **national** legislation, as well as **EU** legislation



Project funded by  
the European Union

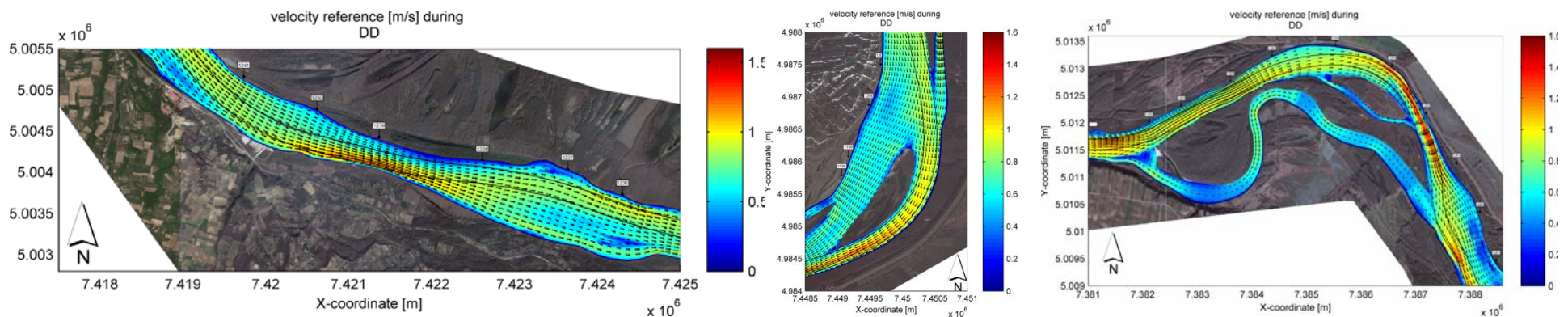
Directorate for Inland Waterways  
Budapest, 17-09-2012

Plovput

# Basic orientation

Ensuring **minimum depth and width** of the fairway during the low water periods, while **respecting environmental requirements**

- Preserving **connectivity** conditions
- Preferring **detached structures**
- Ensuring **mitigation measures**
- Preserving **sediment equilibrium**

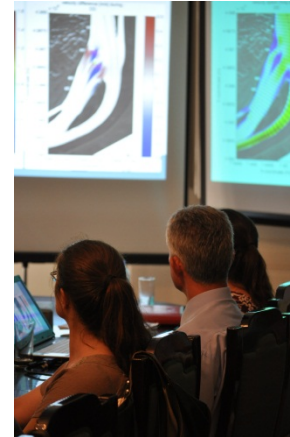
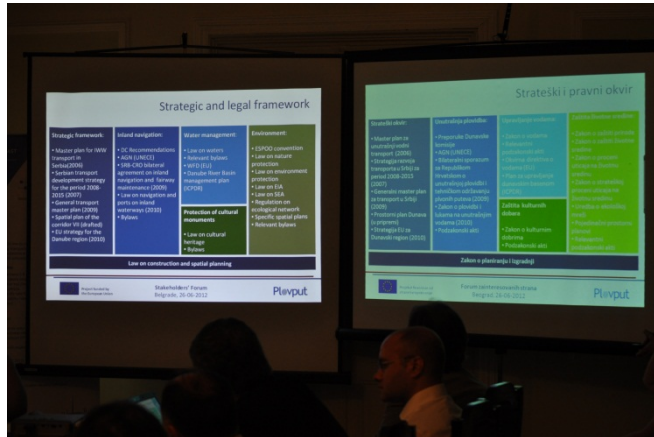


Project funded by  
the European Union

Directorate for Inland Waterways  
Budapest, 17-09-2012



# Dissemination



**Forum of stakeholders of the project**  
 "Preparation of Documentation for River Transport Infrastructure Critical Sectors of the Danube River in Serbia"

Српски	English
Општа pravila organizacije и рада Форума	General rules on organization and work of the Forum
Први састанак Форума 26.06.2012.	First meeting of the Forum 26.06.2012.

- Програм
- Lista учесnika
- Увод у Пловпут
- Основни подаци о Пројекту
- Записник са састанка
- Фотографије

**NEWADA newsletter**

Programa pripremljena za naučnjake i druge zainteresovane strane

Agenda

- List of Participants
- Introduction to Plovput
- Meeting Minutes
- Photos



Project funded by the European Union

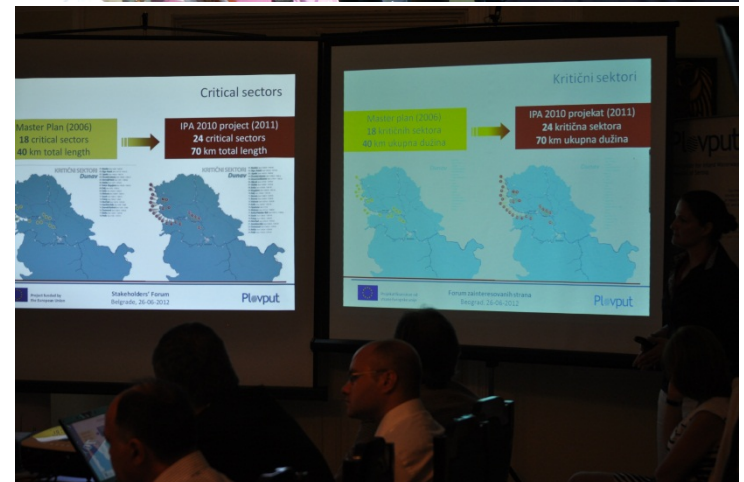
Directorate for Inland Waterways  
 Budapest, 17-09-2012





# Stakeholders' Forum

- **Interdisciplinary** approach
  - inland waterway transport
  - hydrotechnics
  - industry
  - nature and environment protection
  - archaeology
- Kick-of: **26<sup>th</sup> of June 2012**
- Ensuring **transparency**
- Using **multi-criteria analysis**
- **Methodology** of the work ensuring **comparability of options**



Project funded by  
the European Union

Directorate for Inland Waterways  
Budapest, 17-09-2012

Plovput

# Next steps

- Request for the content and the scope of the **EIA**
- Transition to the main design and **tender documentation** phase of the project
- Opening the integrated planning process for critical sectors on SRB-CRO joint stretch of the Danube river

Works

**Supervision and monitoring**



Project funded by  
the European Union

Directorate for Inland Waterways  
Budapest, 17-09-2012

Plovput

# Next steps

## Time perspective **2013-2016**

- **works on 6 critical sectors** for which main designs and tender documentation are being prepared
- Supervision of works and **monitoring of effects**



Project funded by  
the European Union

Directorate for Inland Waterways  
Budapest, 17-09-2012

Plovput

# Summary

Strategic and legal framework

Basic project data

Critical sectors

Range of the project

Basic orientation

Dissemination

Stakeholders' Forum

Next steps



Project funded by  
the European Union

Directorate for Inland Waterways  
Budapest, 17-09-2012

Plovput



**“Preparation of Documentation for River Training and Dredging Works  
on Critical Sectors on the Danube River in Serbia”**

**Thank you  
for your kind attention**

**Zaneta Ostojic Barjaktarevic**  
Directorate for Inland Waterways



Project funded by  
the European Union

**Joint Statement 4<sup>th</sup> Workshop**  
Budapest, 17-09-2012