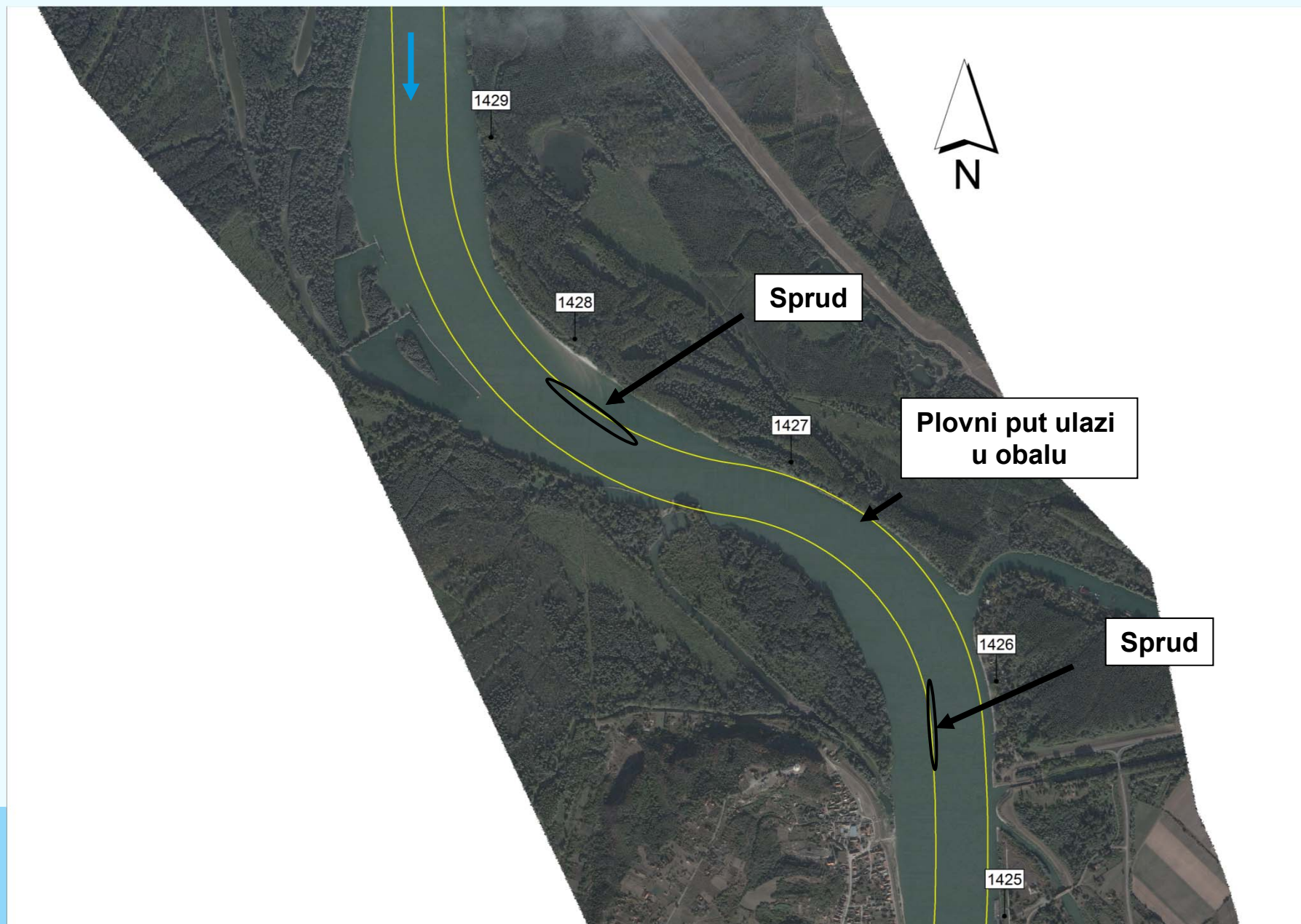


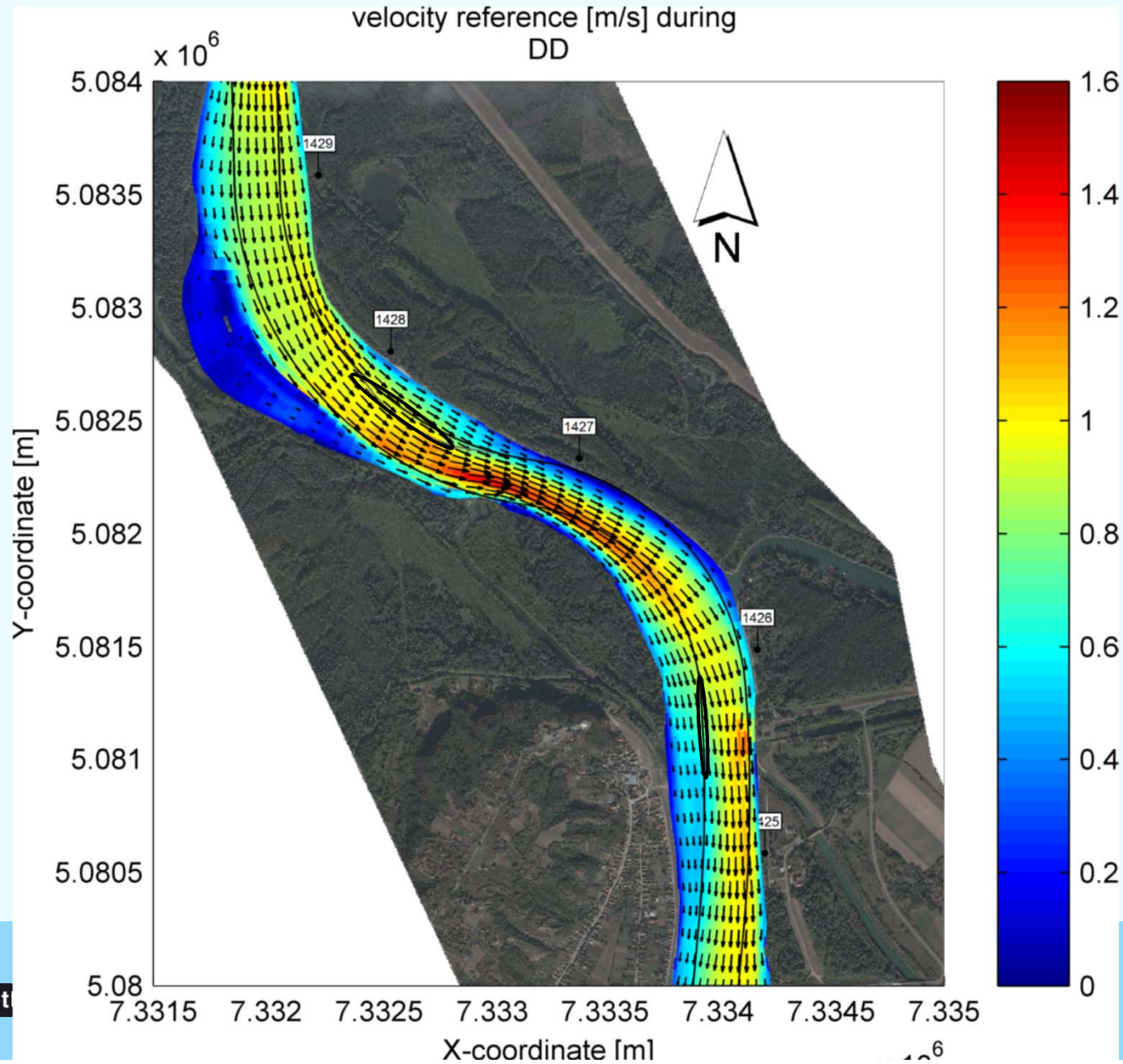
1. Bezdán (km 1,429 – 1,425)



1. Bezdán – postojeće stanje

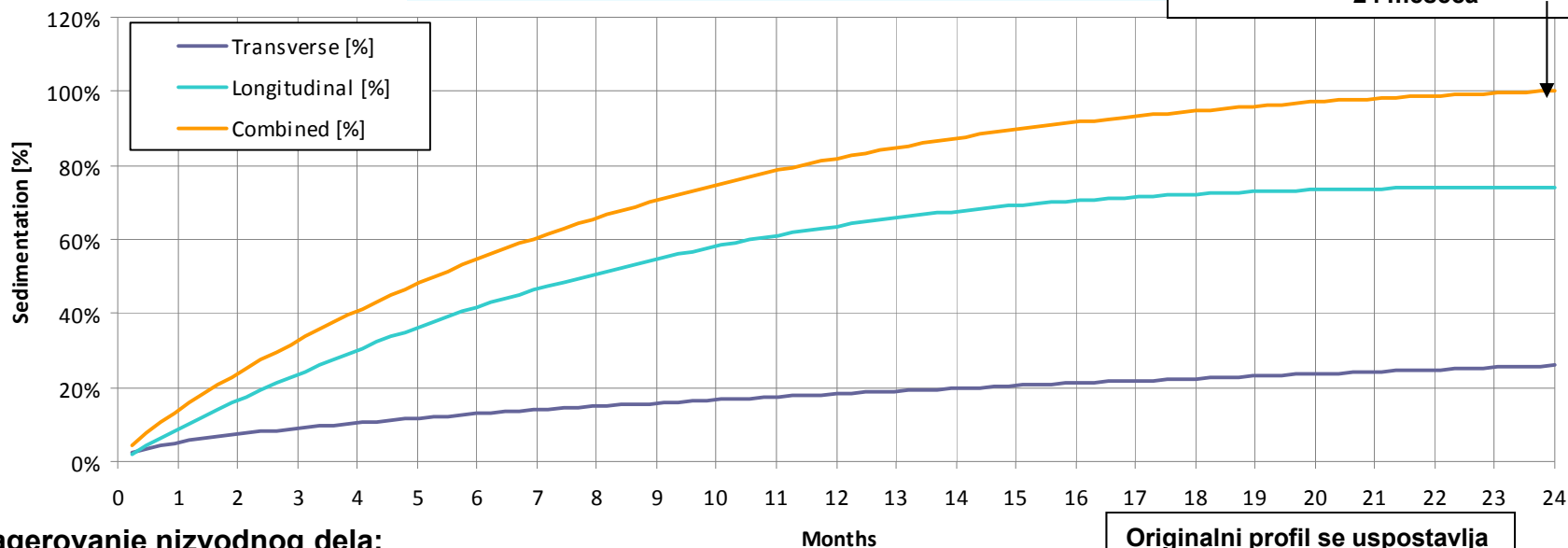


1. Bezdán – postojéce stanje

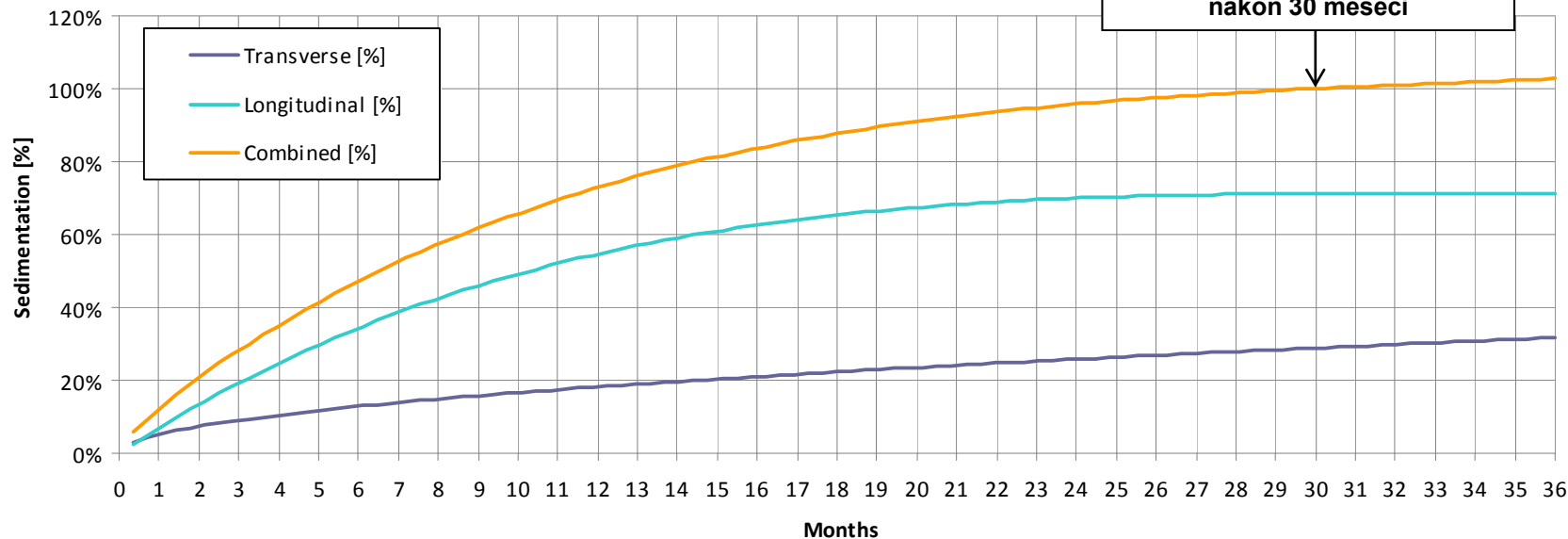


1. Bezdán: opcija 2 – bagerovanje

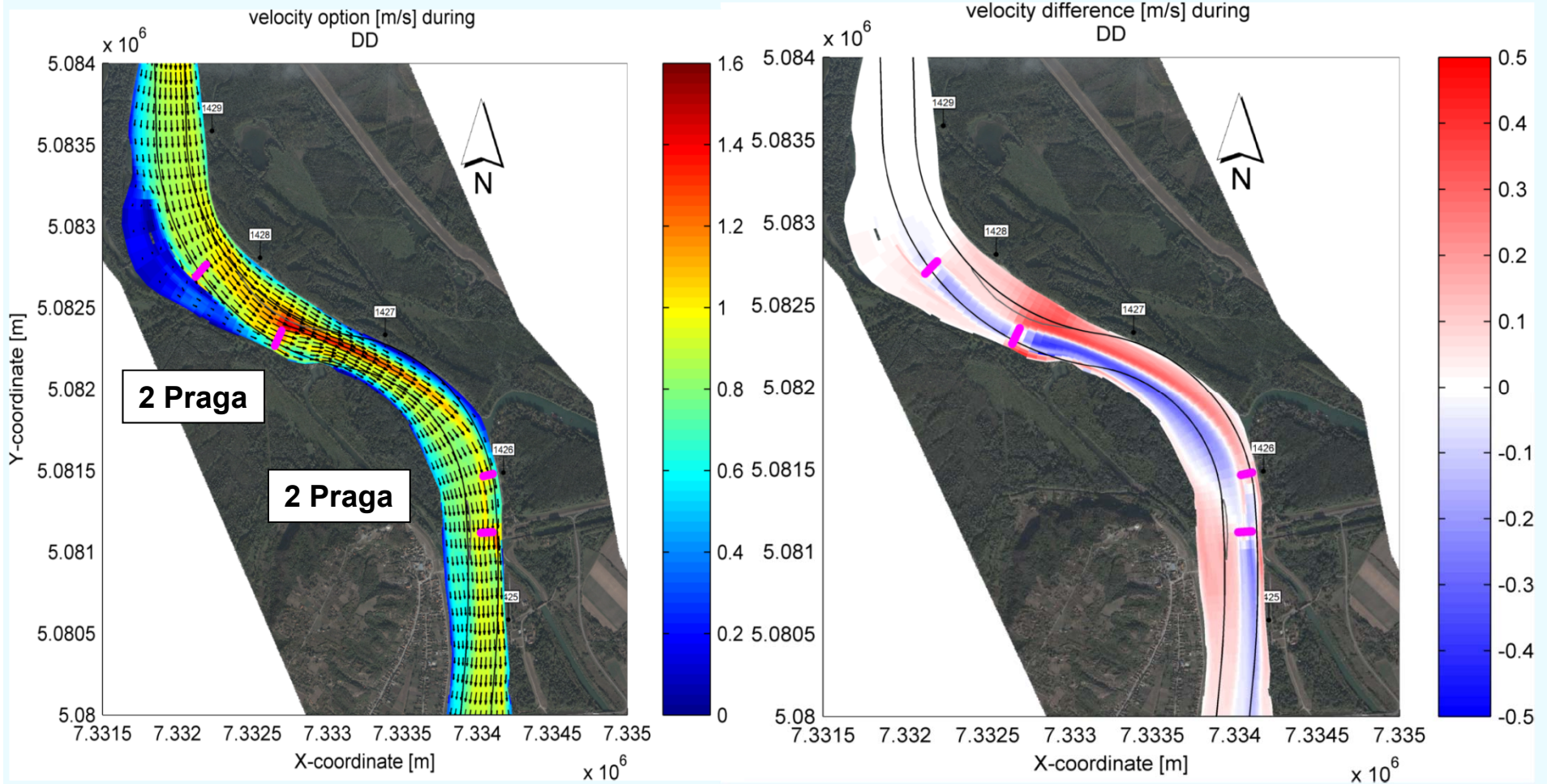
Bagerovanje uzvodnog dela:



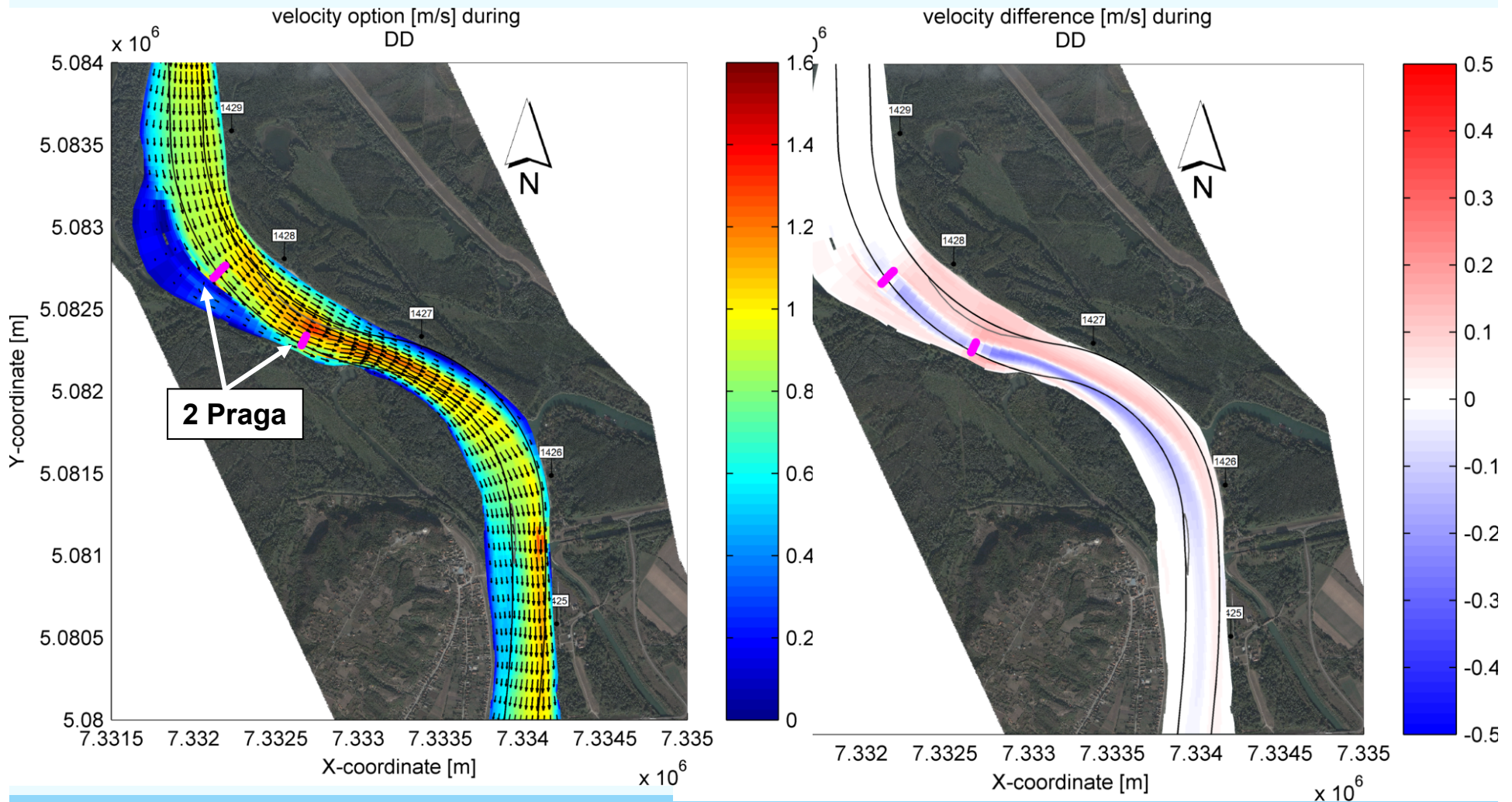
Bagerovanje nizvodnog dela:



1. Bezdán: opcija 3 – 4 praga i pomeranje plovnog puta



1. Bezdán: opcija 5 – 2 praga, bagerovanje, pomeranje plovnog puta



1. Bezdán

- Plovidba:
 - Širina plovnog puta će se povećati nakon postavljanja pragova;
 - Neophodno je pomeranje plovnog puta.
- Životna sredina:
 - Visina pragova biće optimizovana;
 - Opcija 5: smanjena visina drugog praga.
- Troškovi:
 - Pragovi su 180 - 230 m široki i prosečna visina je oko 2-5.5 m;
 - Bagerovanje je neophodno ponavljati (+/- svake godine)

1. Bezdán

Option	Description	Navigation weight: 25%	Environment weight: 40%	Technical matters weight: 25%	Cost weight: 10%
1		Has not been selected for modelling			
2	Dredging	1	3	3	3
3	4 Sills + fairway realignment	3	1	1	2
4		Has not been selected for modelling			
5	2 Sills +dredging + fairway realignment	2	2	2	1

Prema MCA vrednovanju, opcija 3 ima najbolje rezultate

Hvala na pažnji

