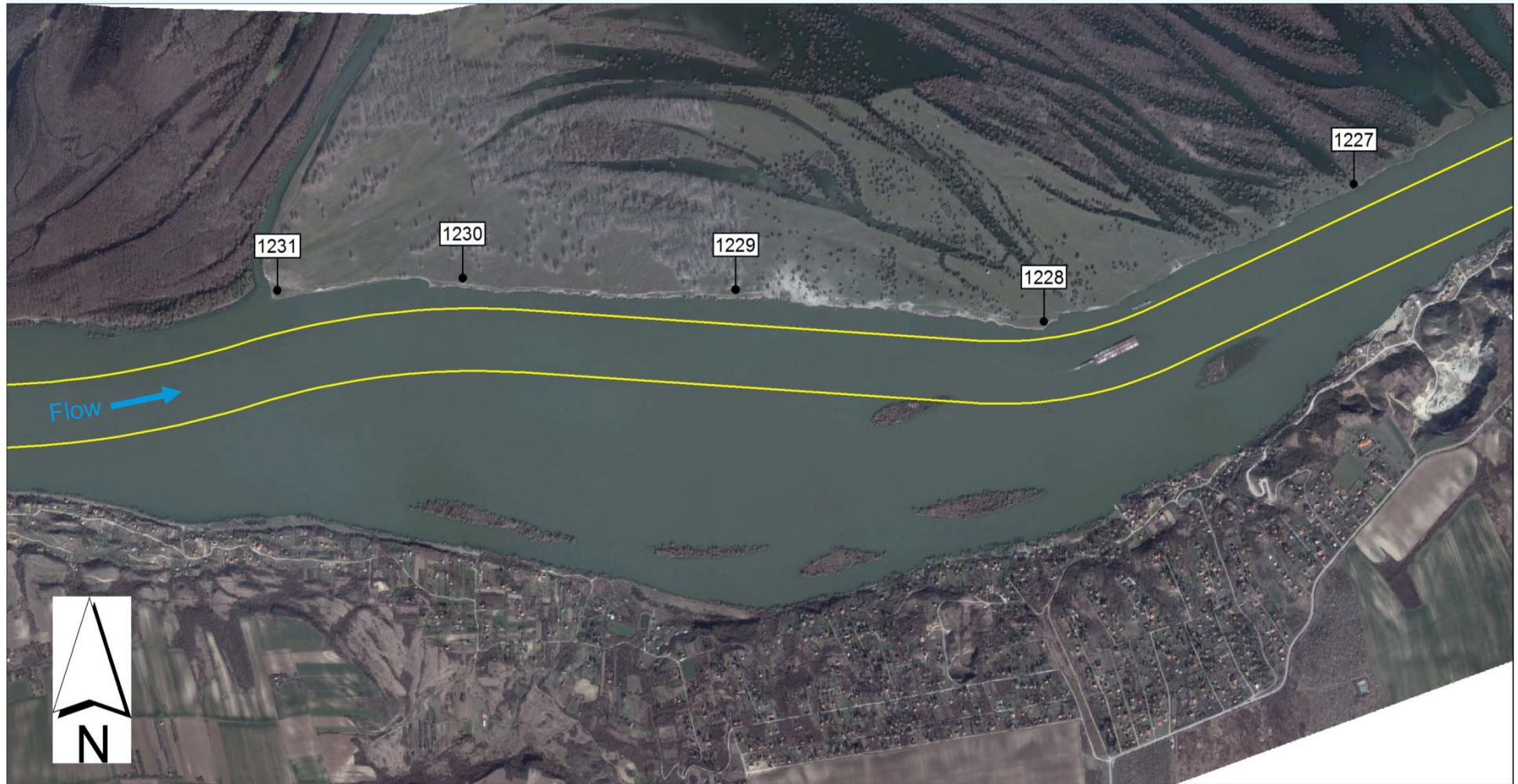


23. Sector – Beska (km 1,232.0 – 1,226.6)

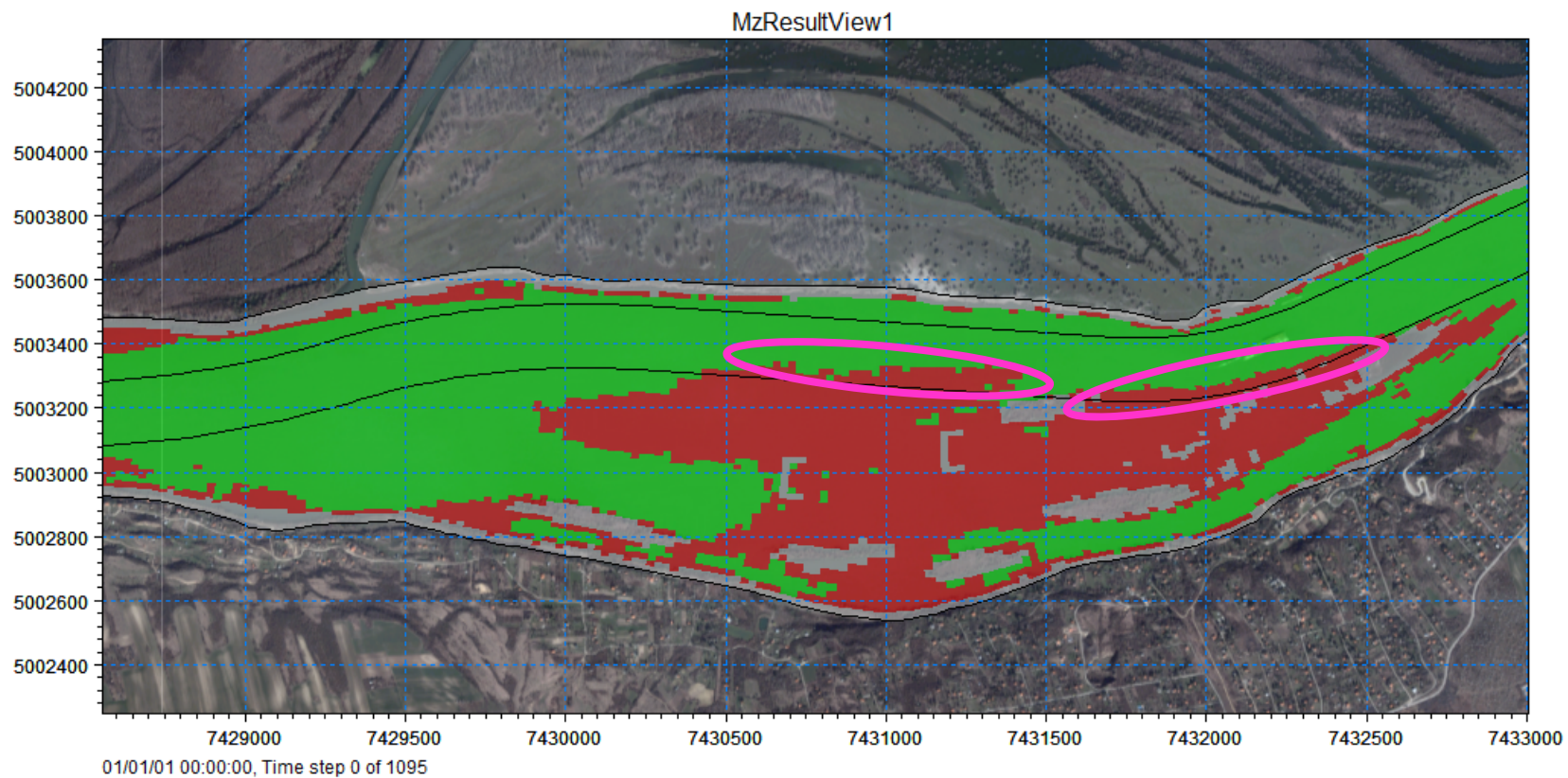


23. Beska – existing situation



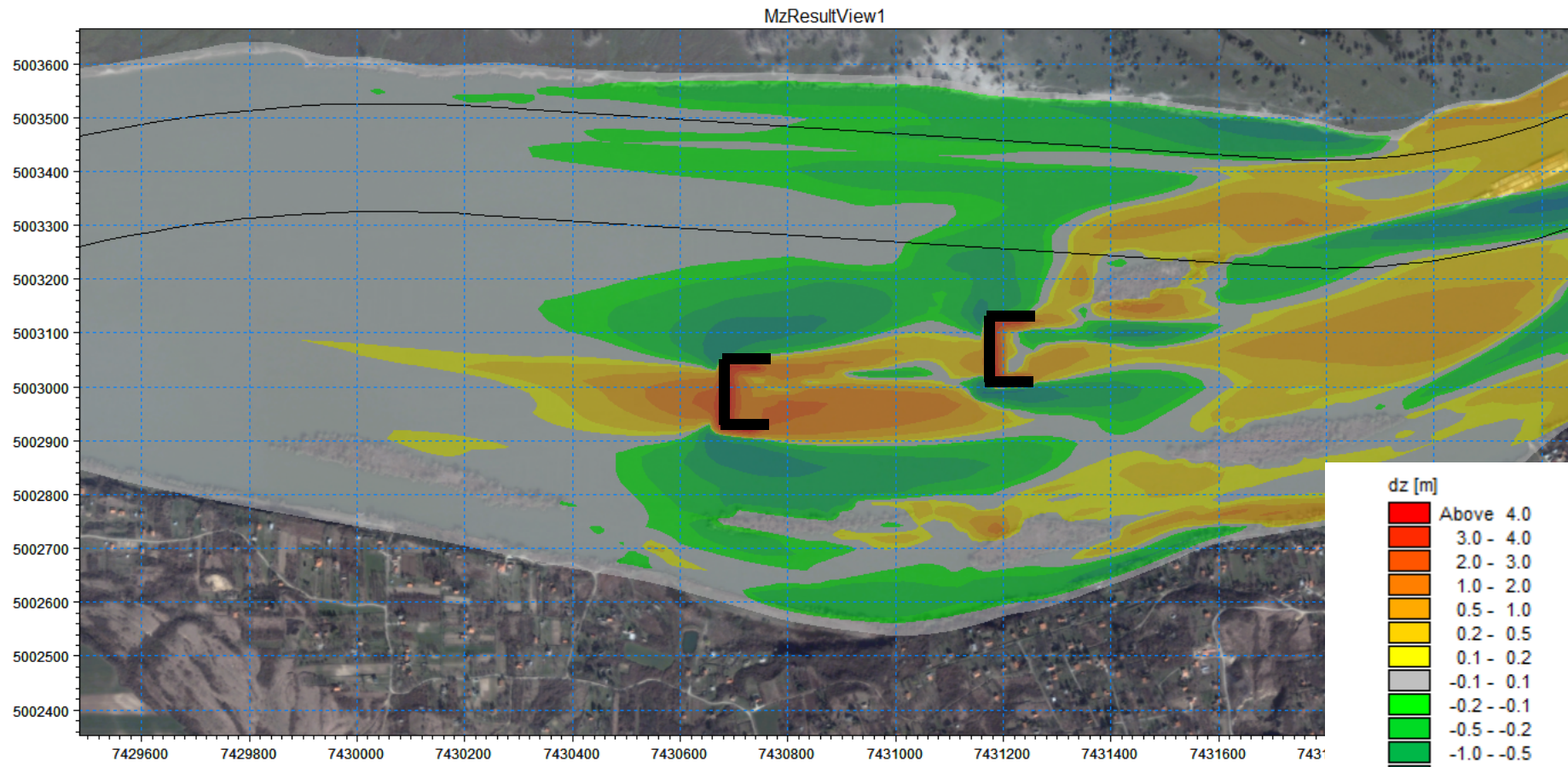
23. Beska – existing situation

Where is the depth less than 2.5 at DLNL (2012)?



23. Beska - simulation

Simulated bed level changes after 1 year, remaining 2 years to be modelled



12/27/01 00:00:00, Time step 36 of 109

23. Beska – next steps

Optimisation of:

- Chevrons location and height (DLNL+0.5m and +1m)

Investigation of:

- Decrease resistance in side channel
- Two sills in the main channel

24. Preliv

- Not yet started

Thank you for your kind attention

