

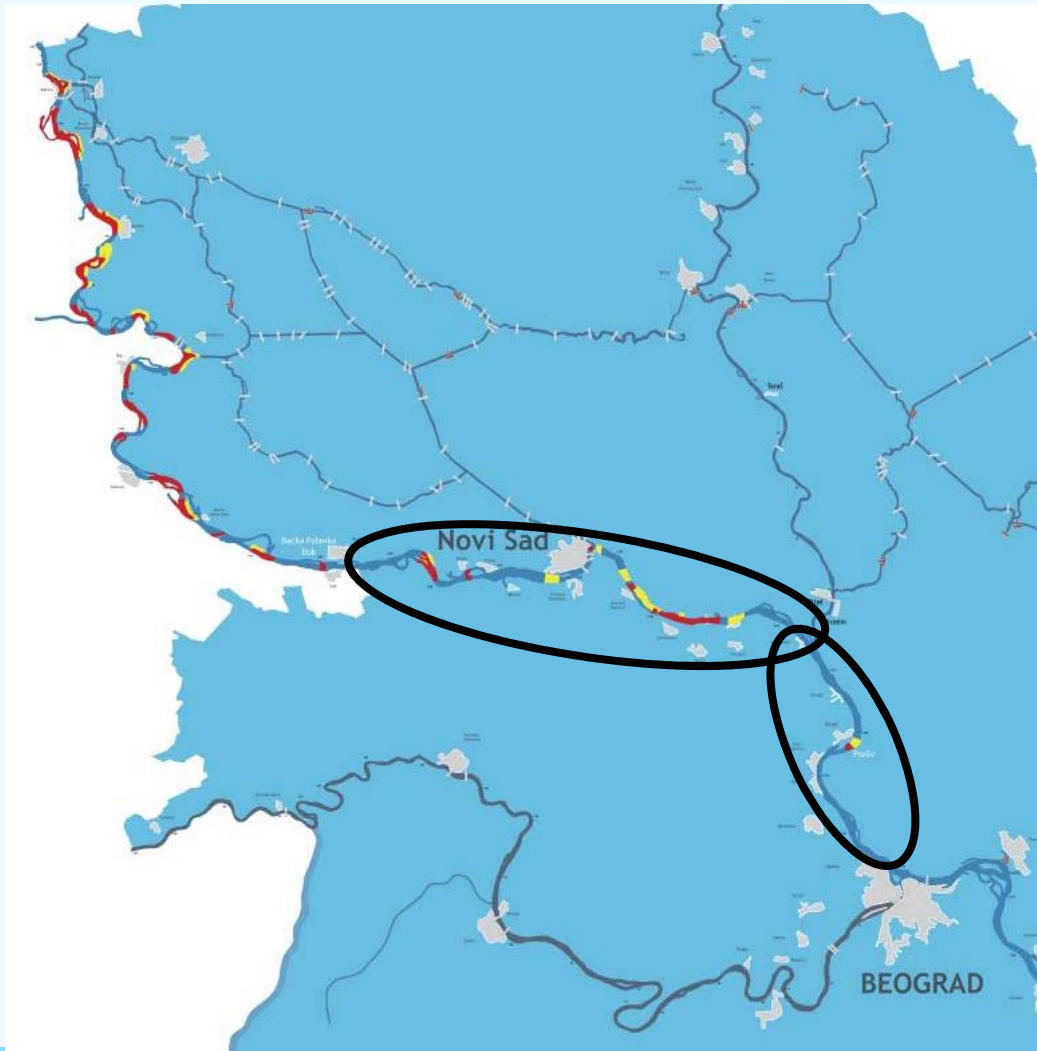
Status of scenario simulations



Preparation of Documentation for River Training and Dredging Works on Selected Locations along the Danube River. A project funded by the European Union

14 December, 2012

Serbian Sectors (km 1,300-1,273)

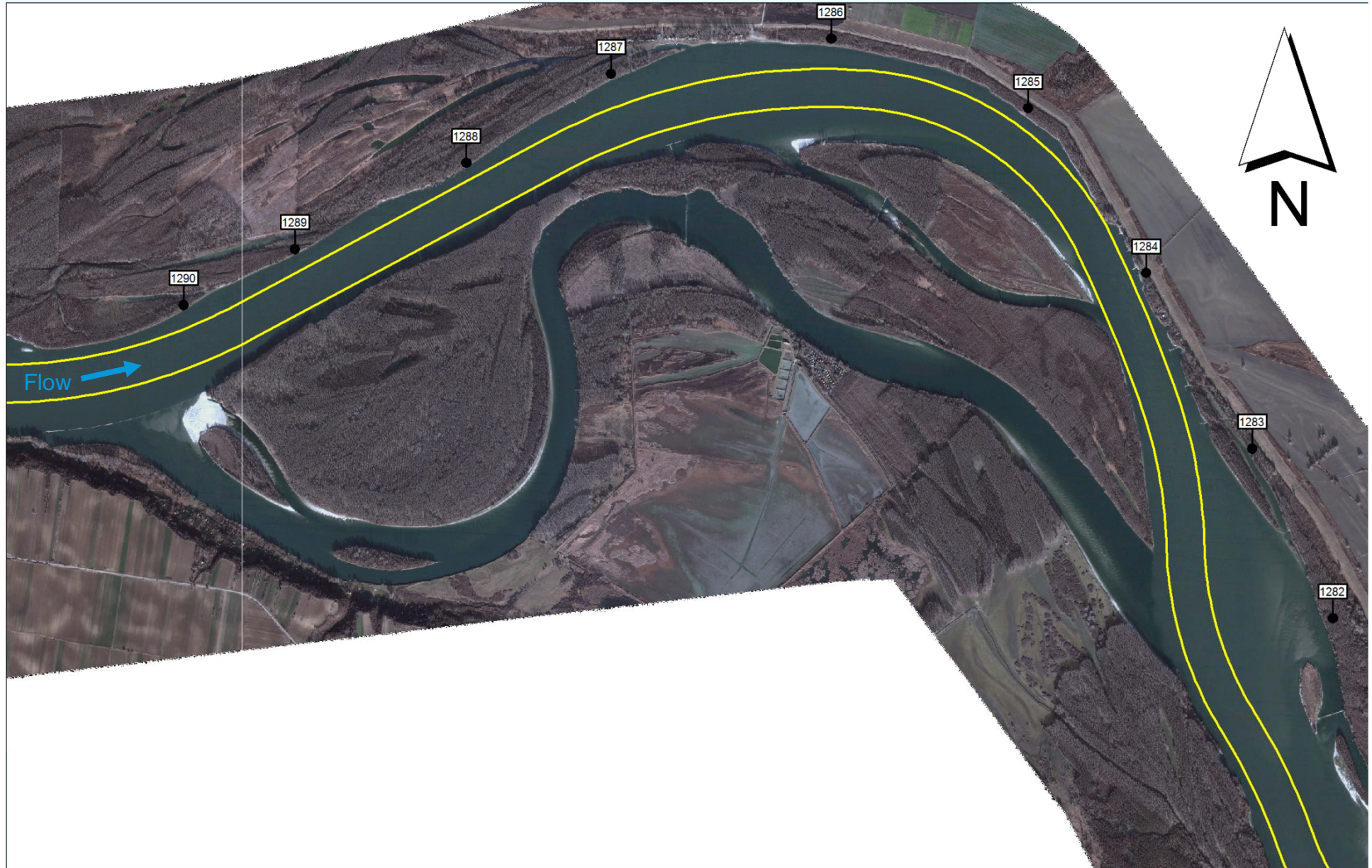


- 18. Susek
- 19. Futog
- 21. Arankina Ada
- 22. Cortanovci
- 23. Beska
- 24. Preliv

18. Sector – Susek (km 1,287-1,281)



18. Susek – existing situation

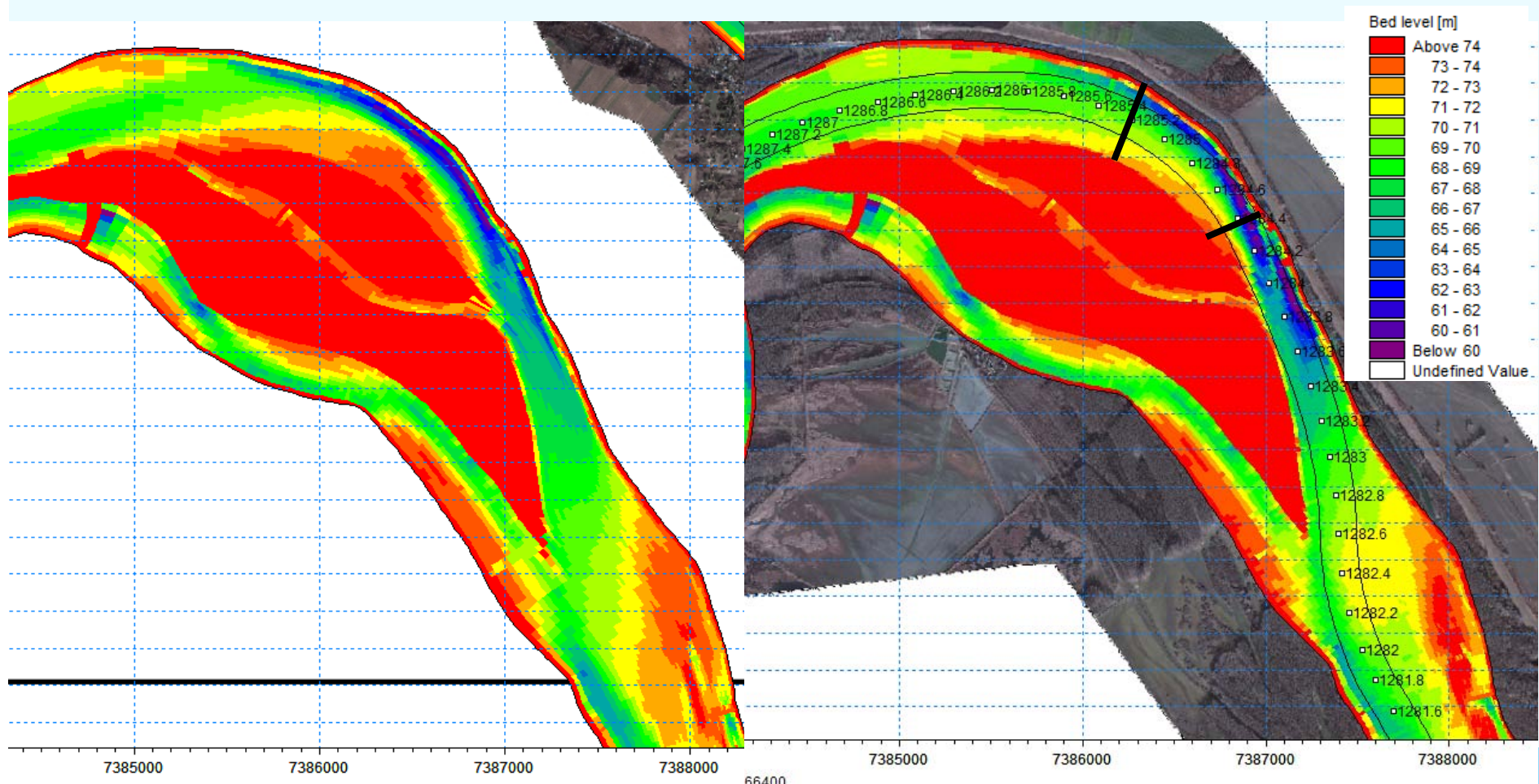


18. Susek – existing situation

Observed bed level changes:

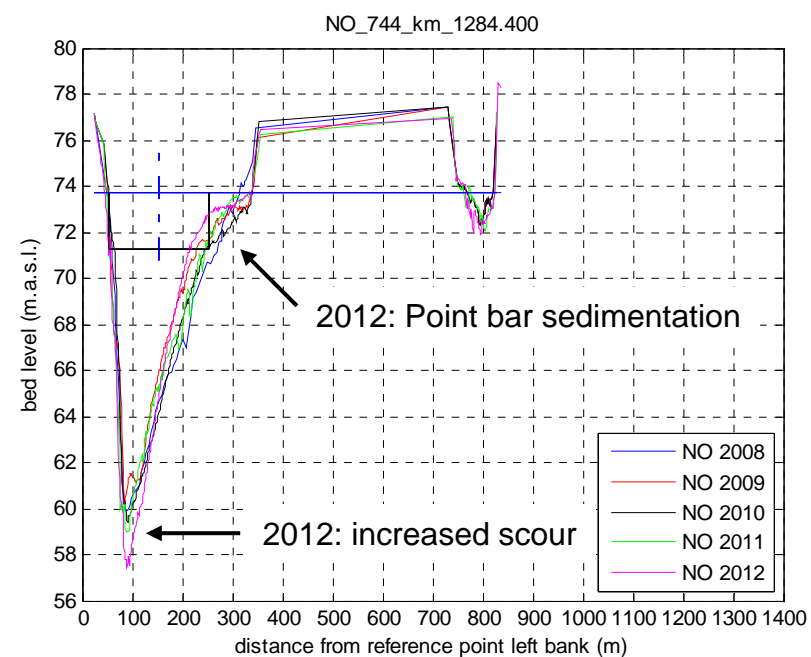
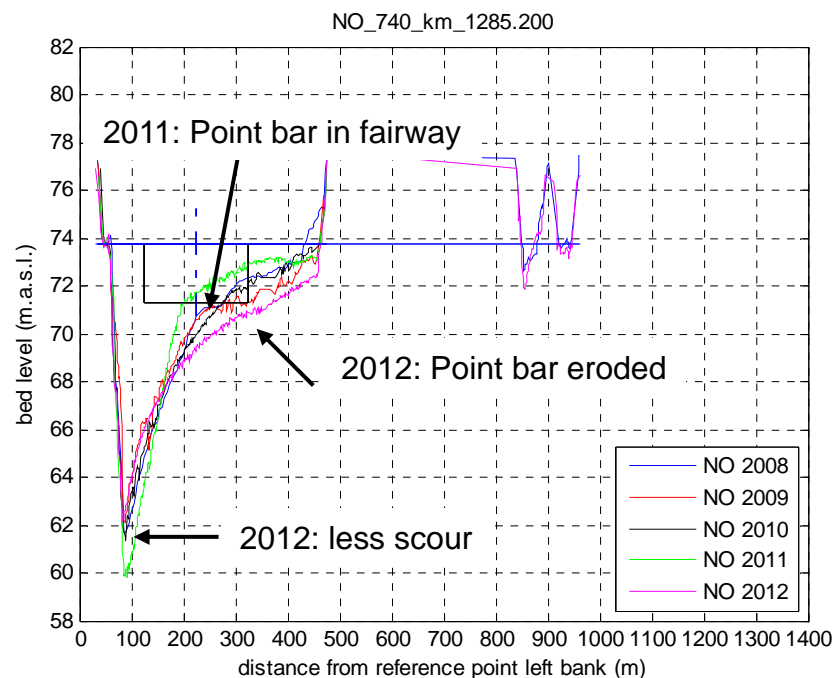
2011

2012



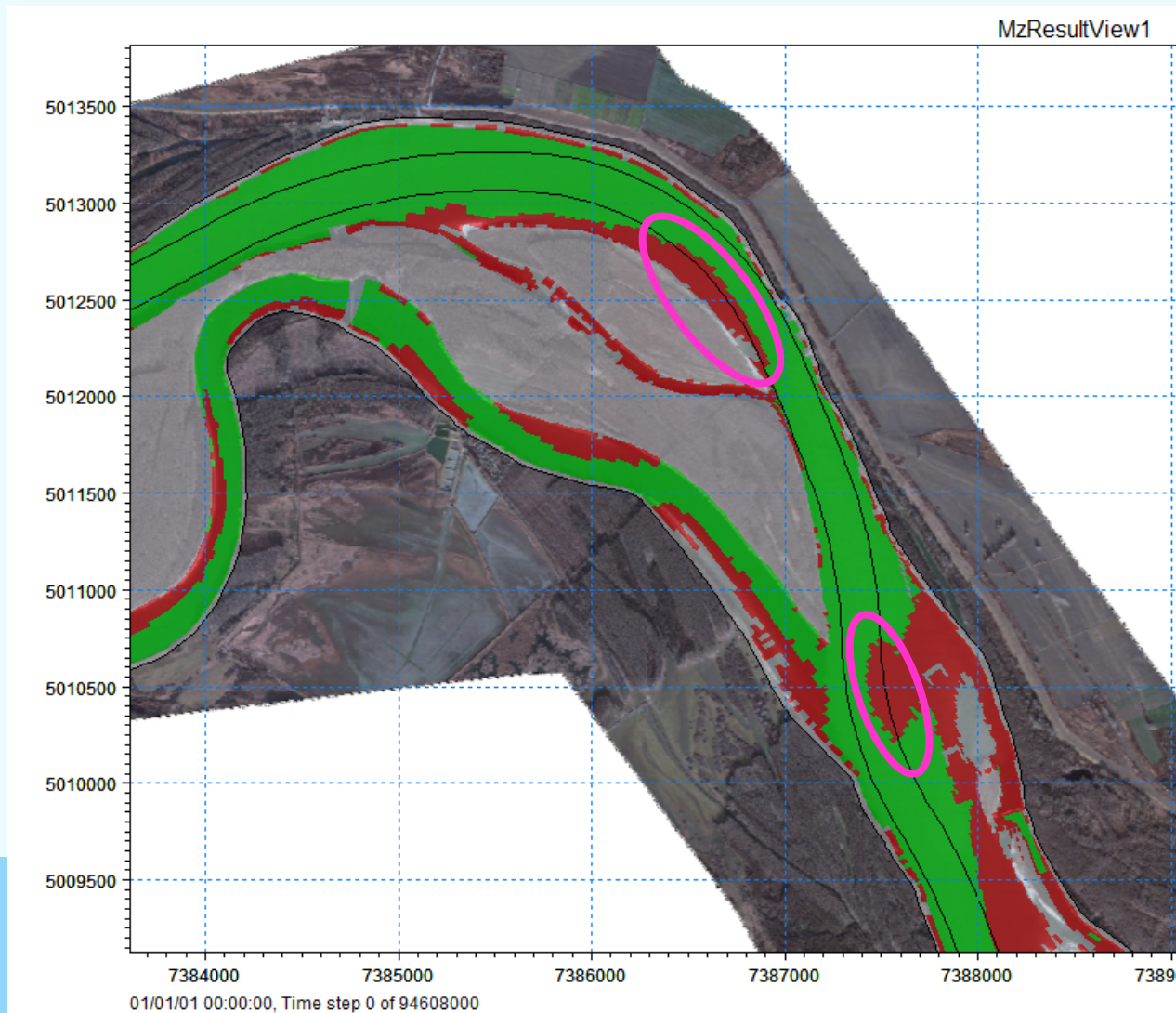
18. Susek – existing situation

Observed bed level changes:



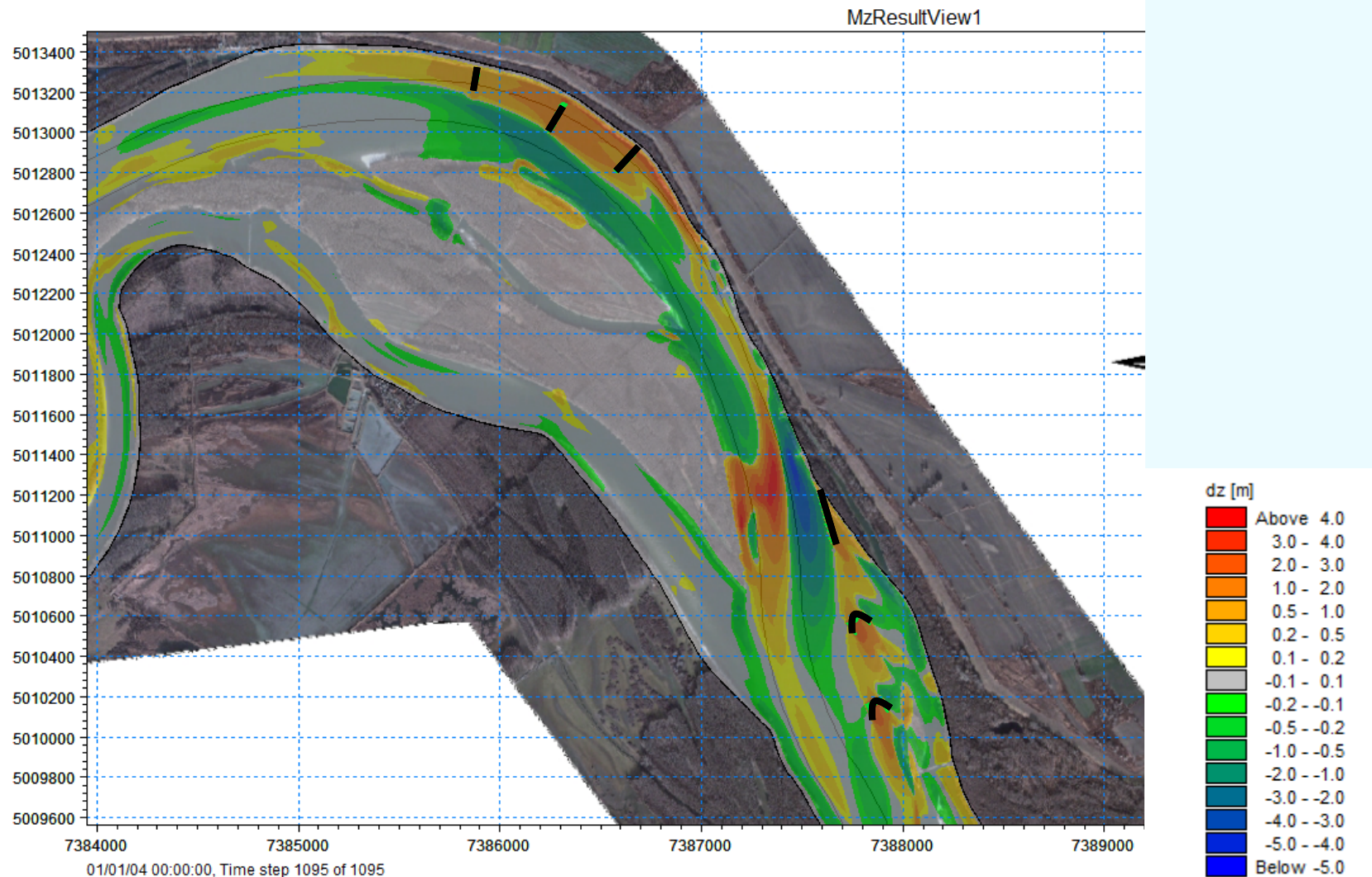
18. Susek – existing situation

Where is the depth less than 2.5 m at DLNL (2012)?



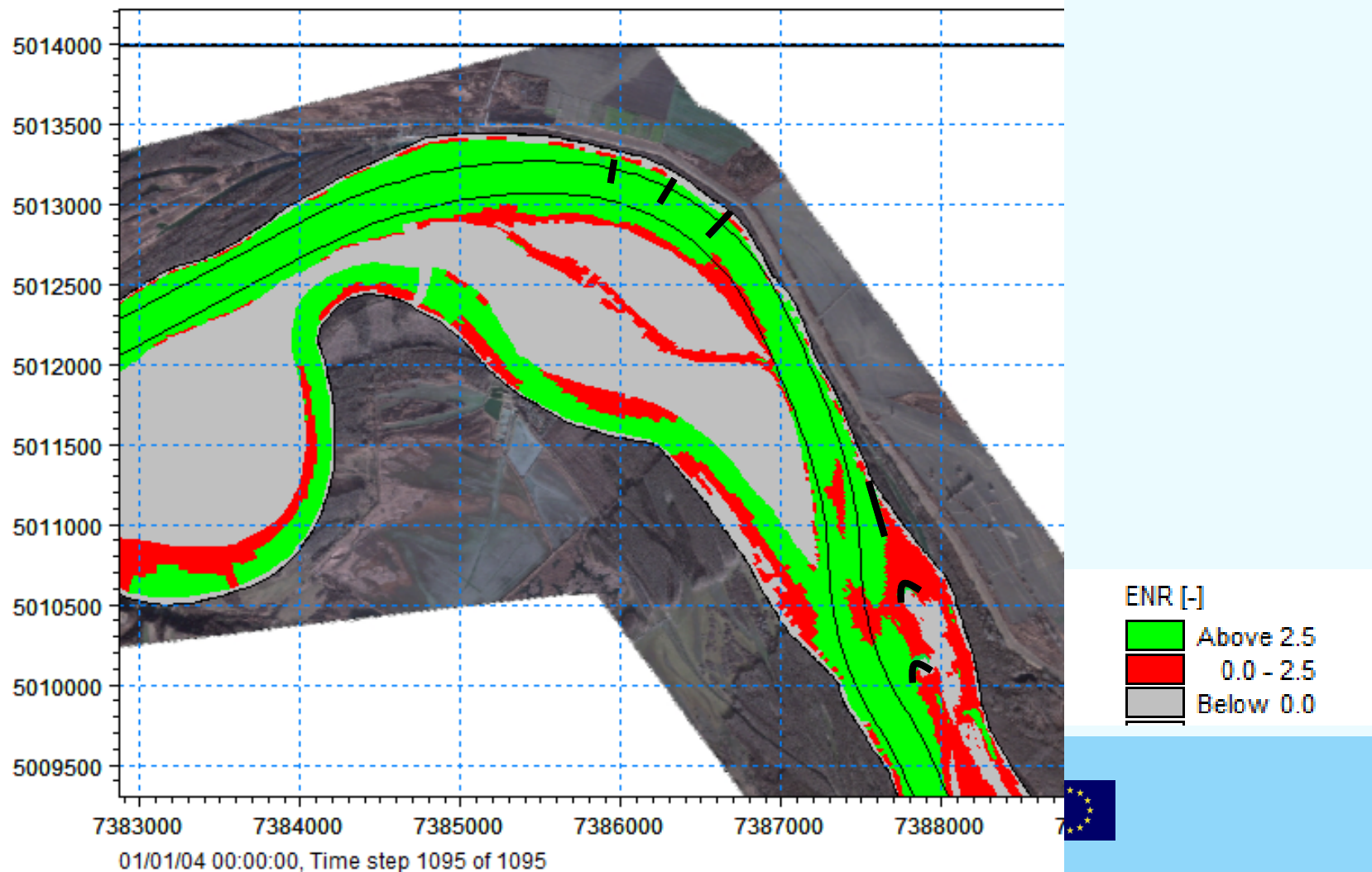
18. Susek - simulation

Scenario 1: Simulated bed level changes after 3 years



18. Susek - simulations

Do we have sufficient depth below DLNL, green = yes, red = no



18. Susek – next steps

Optimisation of:

- Sills location and height
- Location and height of longitudinal dike
- Chevrons location and height (DLNL+0.5m and +1m)

Mitigate adverse morphological effects (in other words make sure we don't get problems downstream)