

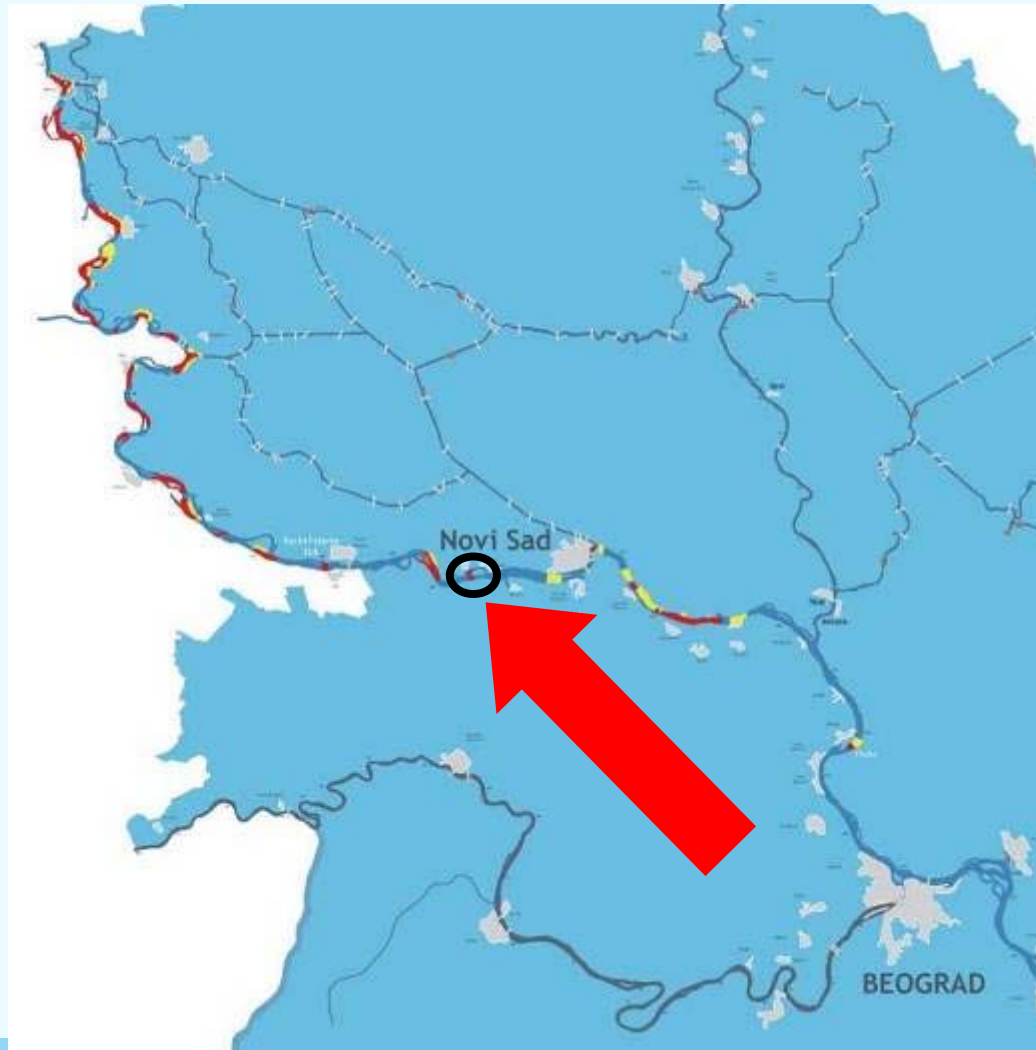
Morphological modelling results Futog



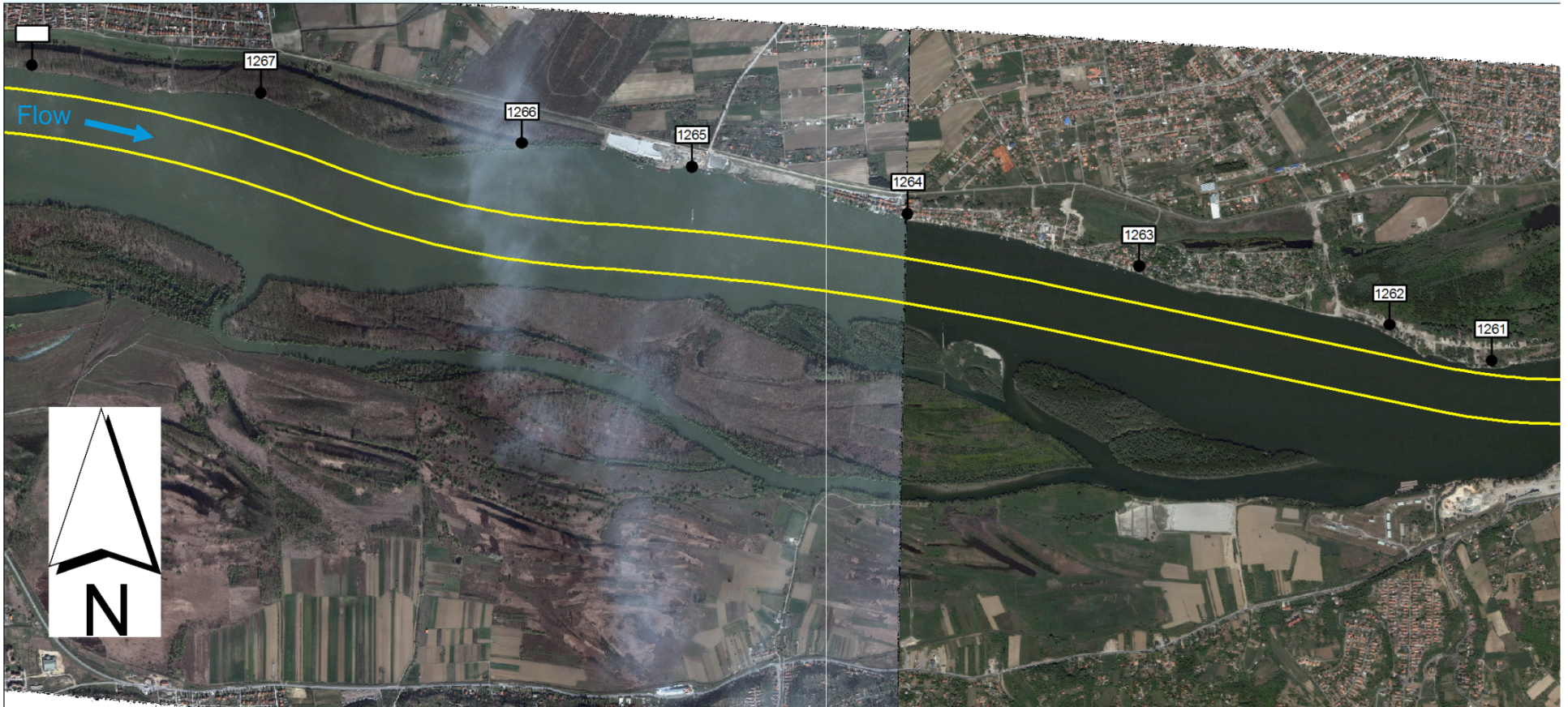
Preparation of Documentation for River Training and Dredging Works on Selected Locations along the Danube River. A project funded by the European Union

6 February, 2013

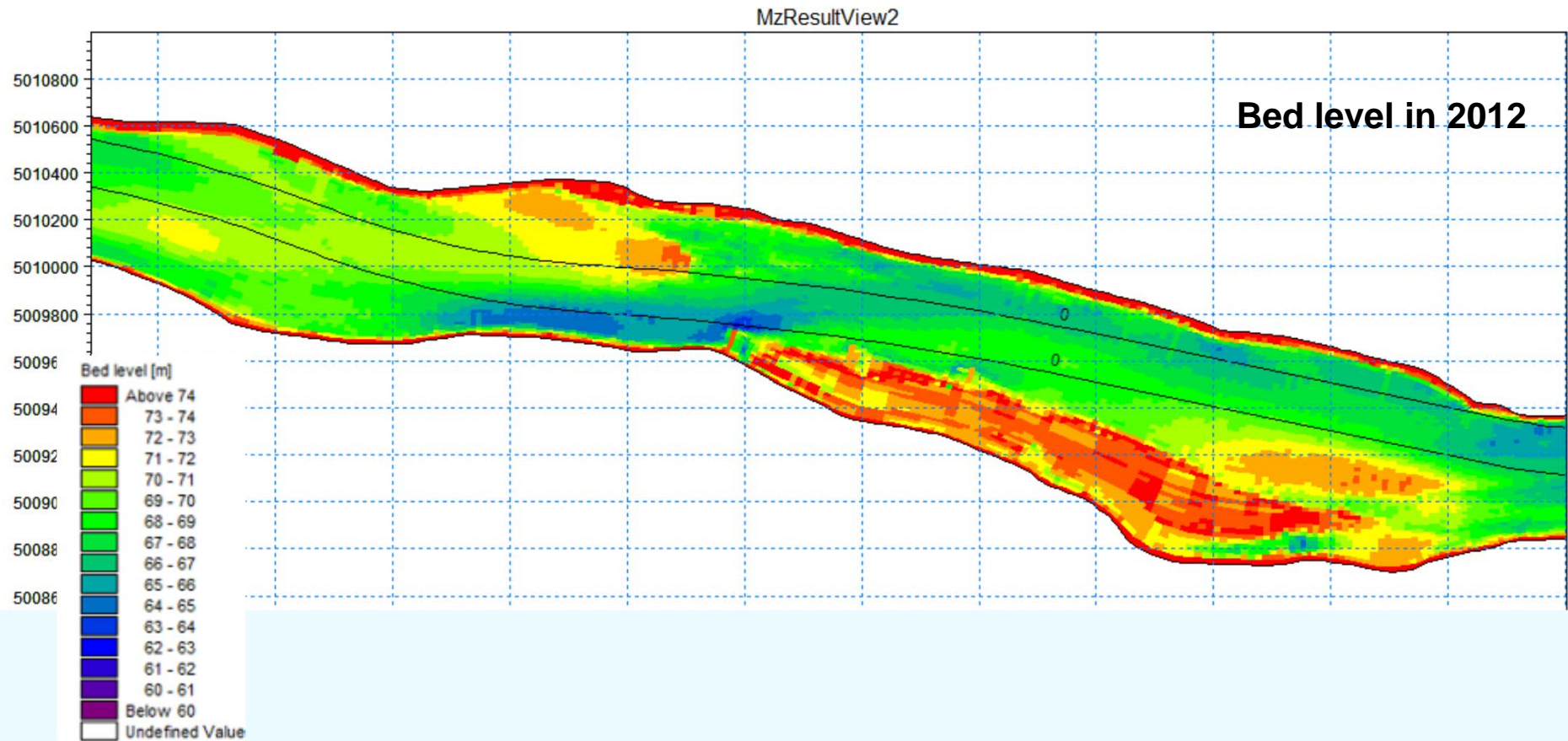
19. Sector – Futog (km 1,267.4 – 1,261.6)



19. Futog – existing situation

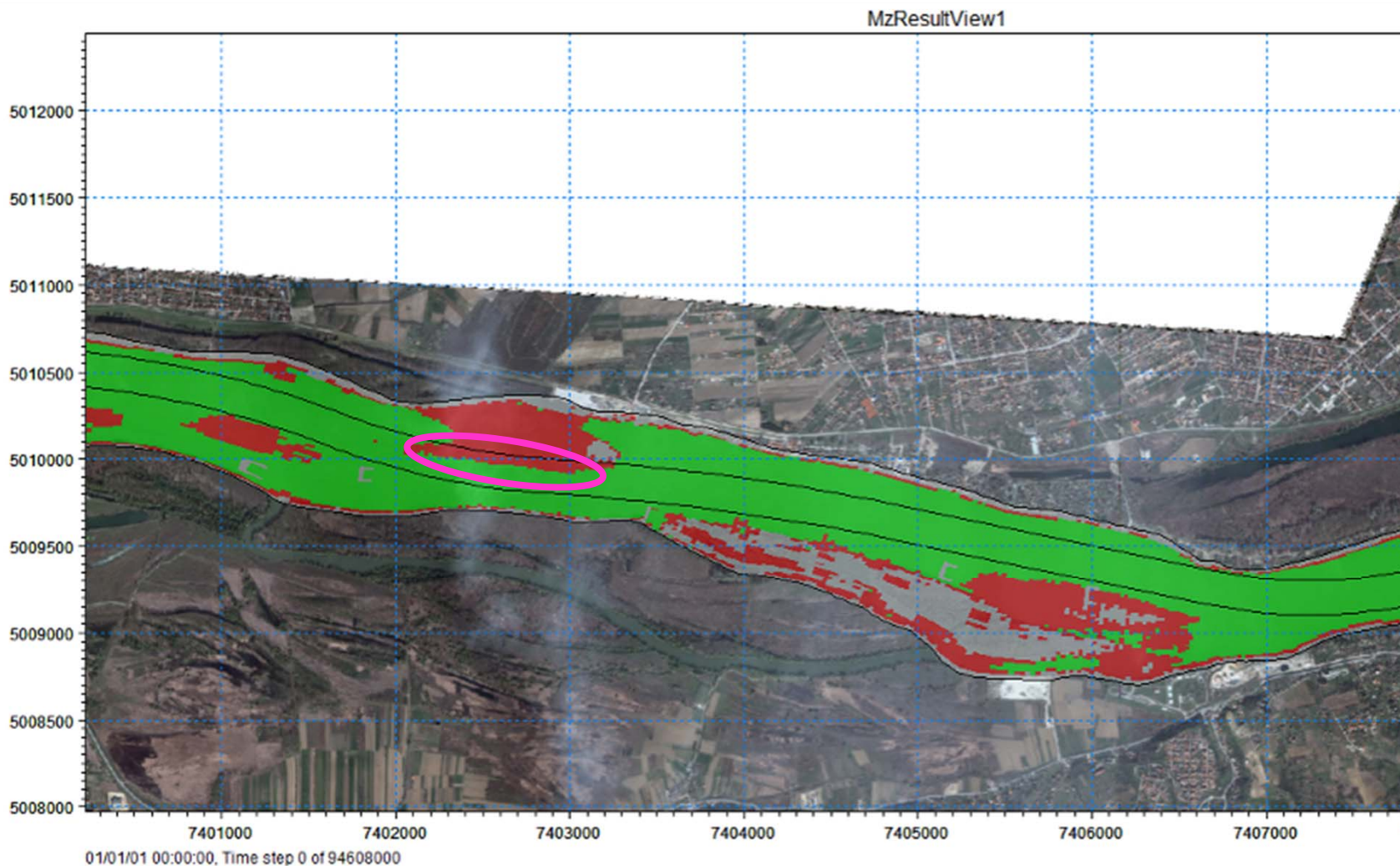


19. Futog – existing situation



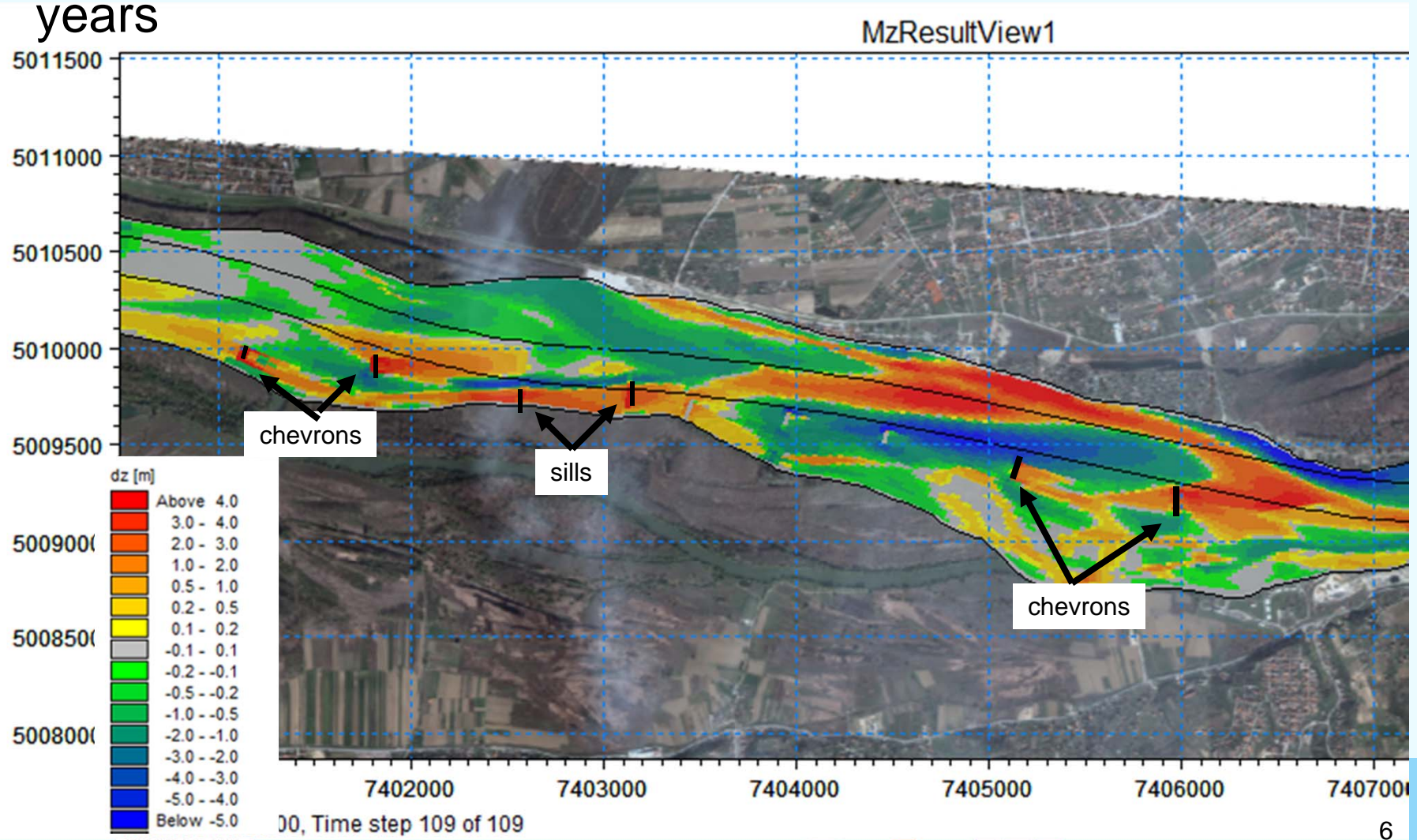
19. Futog – existing situation

Where is the depth less than 2.5 at DLNL (2012)?



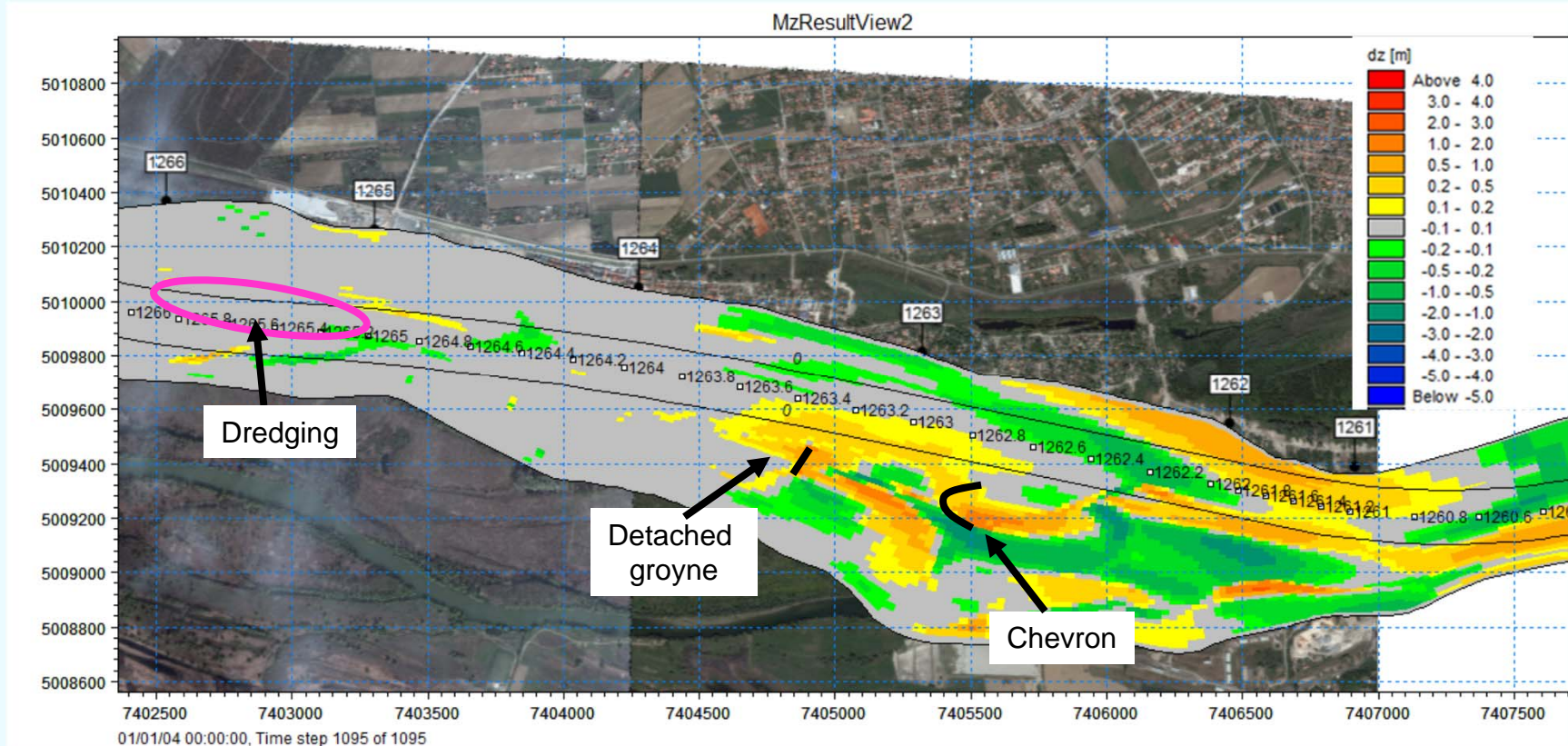
19. Futog - simulation

Conceptual design: Simulated bed level changes after 3 years



19. Futog - simulation

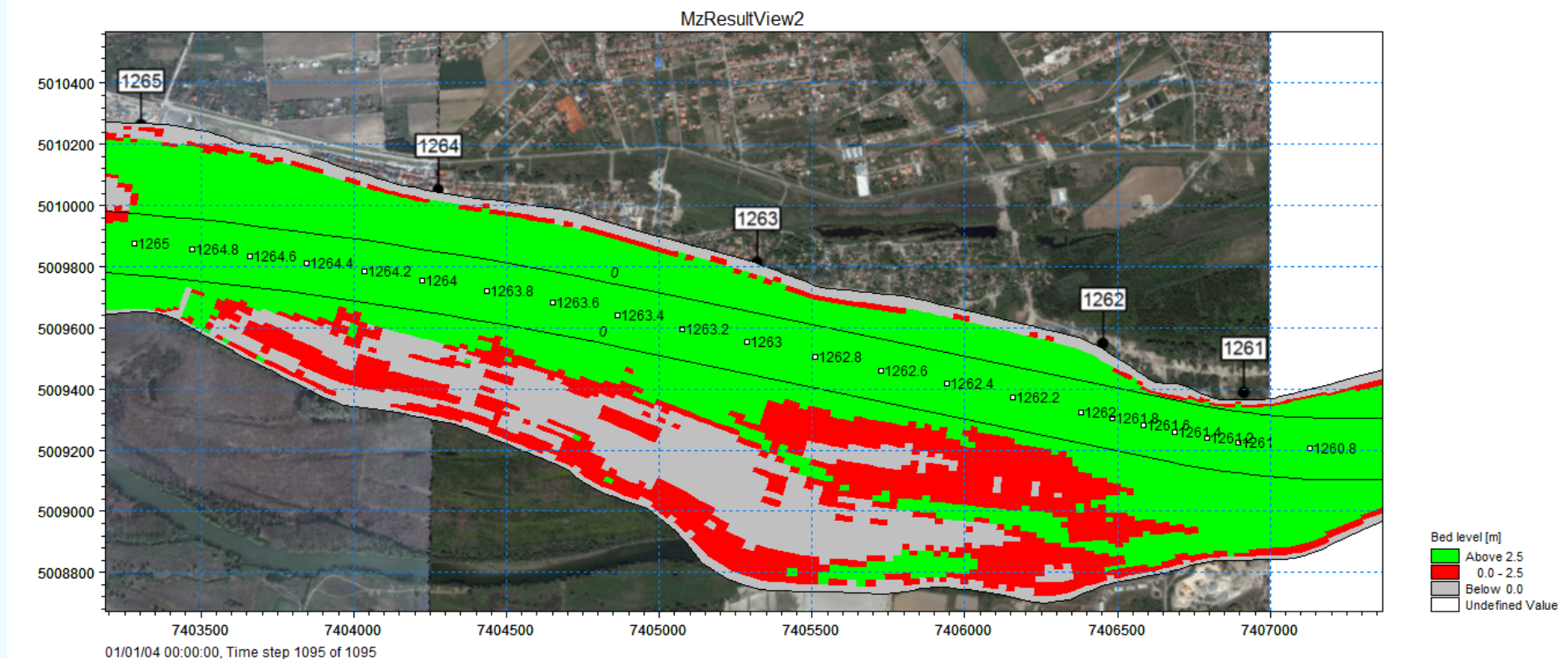
Simulated bed level changes after 3 years



- Upstream: dredging;
- Downstream: detached groyne (DLNL + 1m) and a chevron (DLNL)

19. Futog - simulation

- Sufficient depth after simulation of 3 years?



19. Futog – conclusions

- Conceptual design (Phase 2) induces to much adverse morphological impacts.
- Amount of river training works has been reduced to:
 - Dredging upstream;
 - Downstream: detached groyne and chevron.
- Dredging volume and backfilling time to be assessed

Thank you for your kind attention

