

Morphological modelling results

Preliv



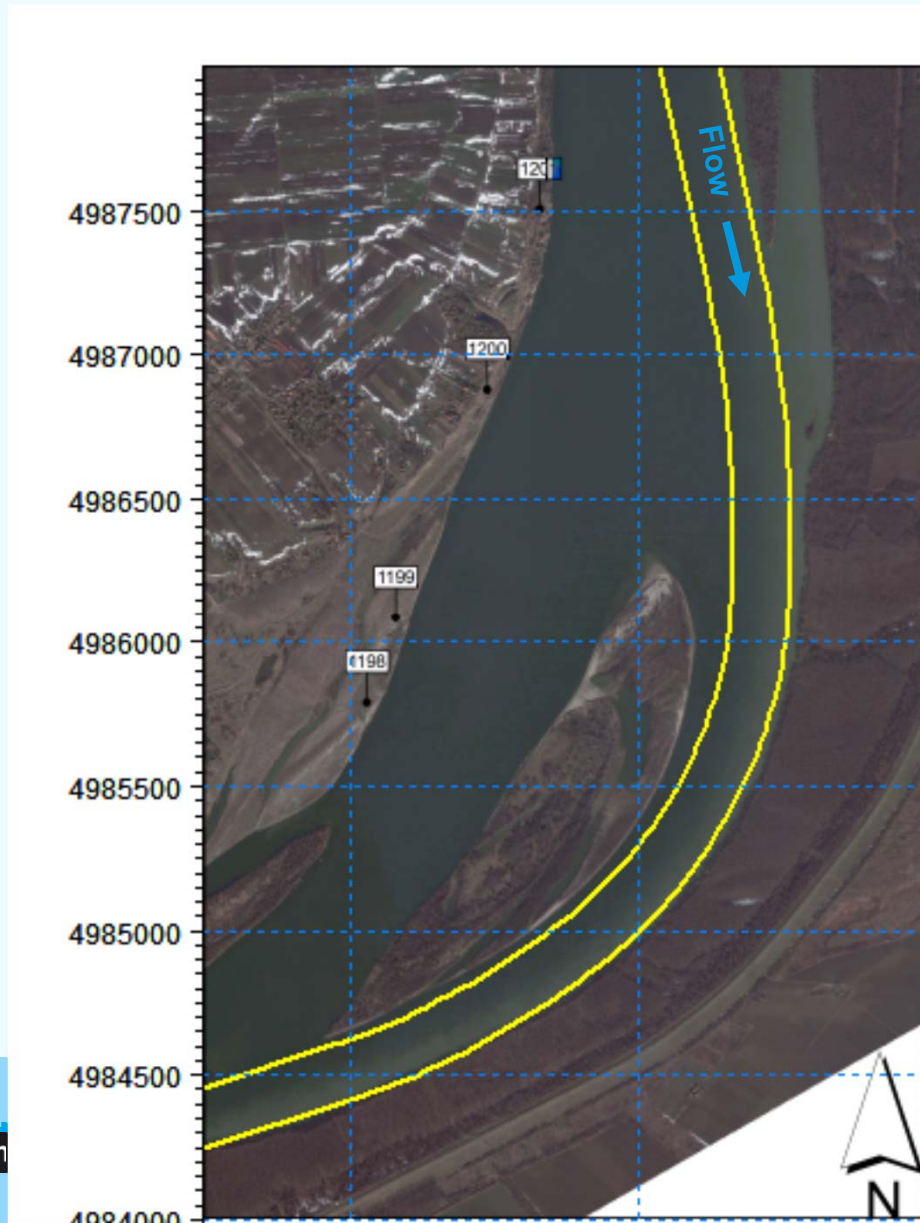
Preparation of Documentation for River Training and Dredging Works on Selected Locations along the Danube River. A project funded by the European Union

6 February, 2013

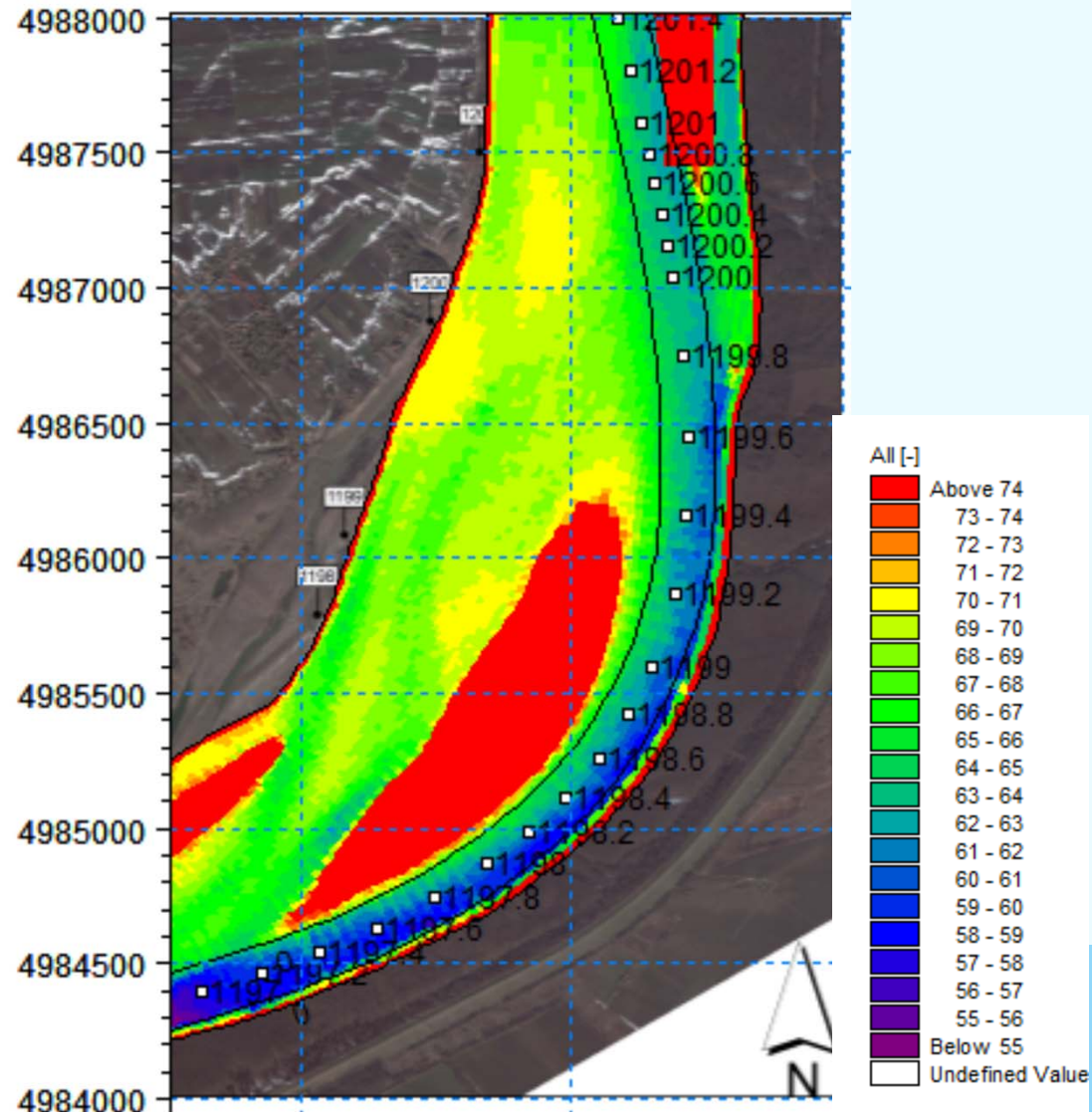
23. Sector – Preliv (km 1,207.0 – 1,195.0)



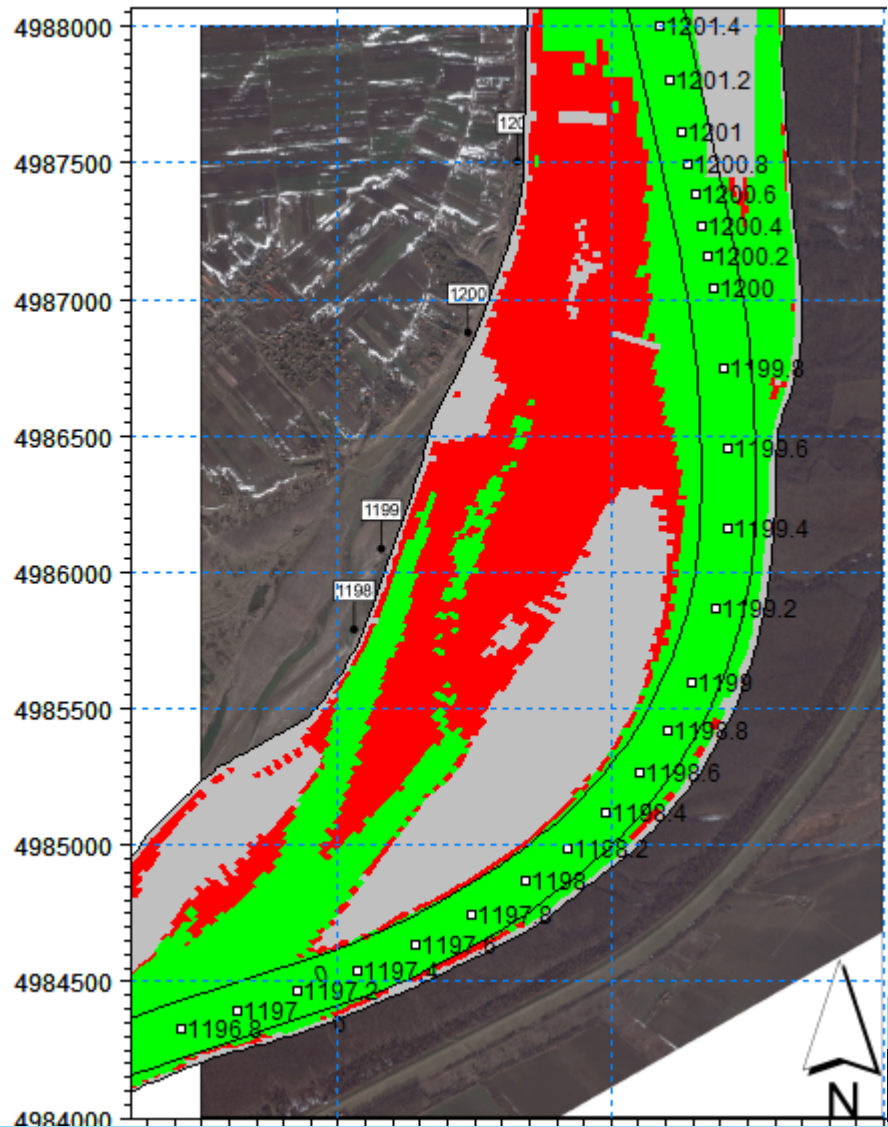
24. Preliv- existing situation



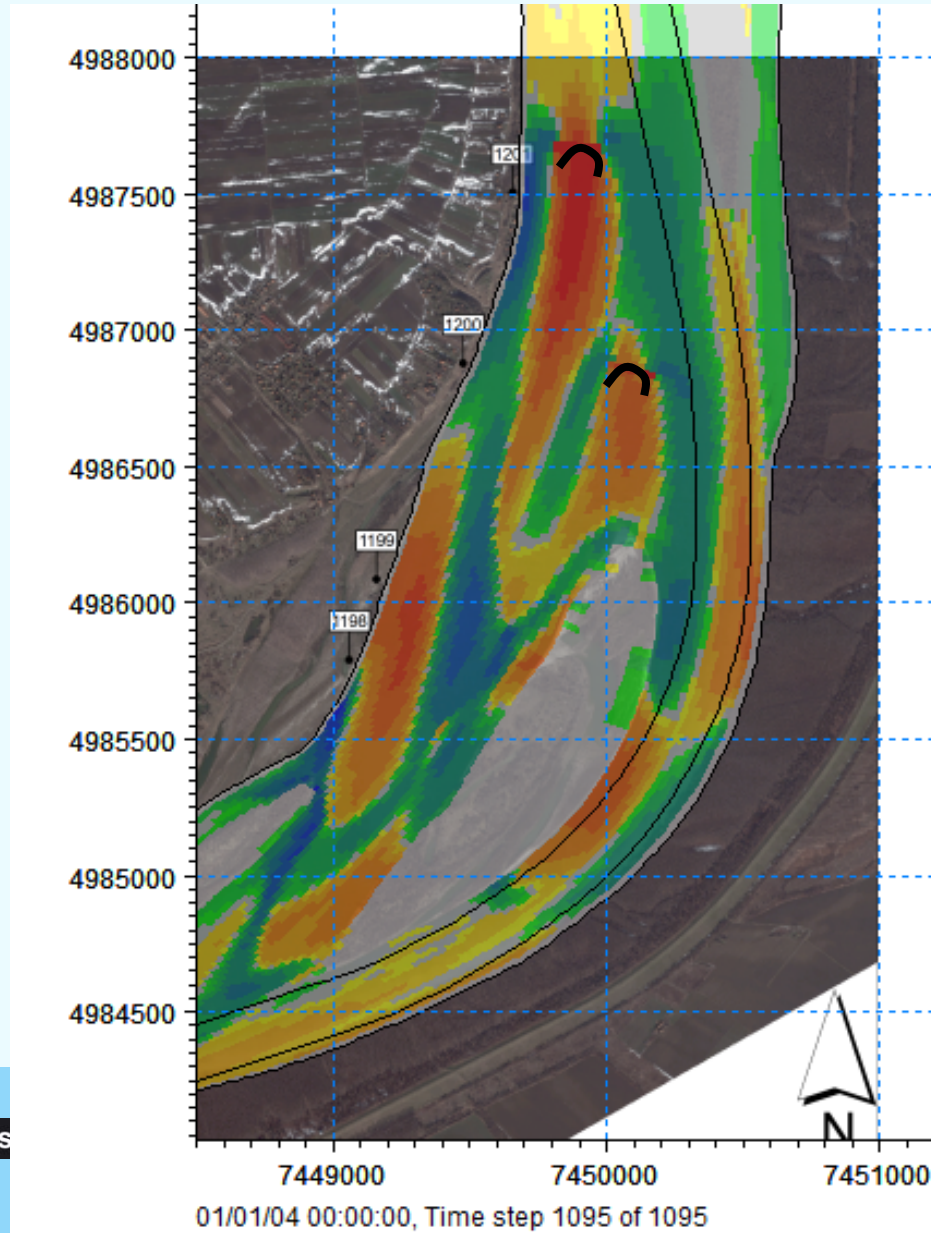
24. Preliv- existing situation



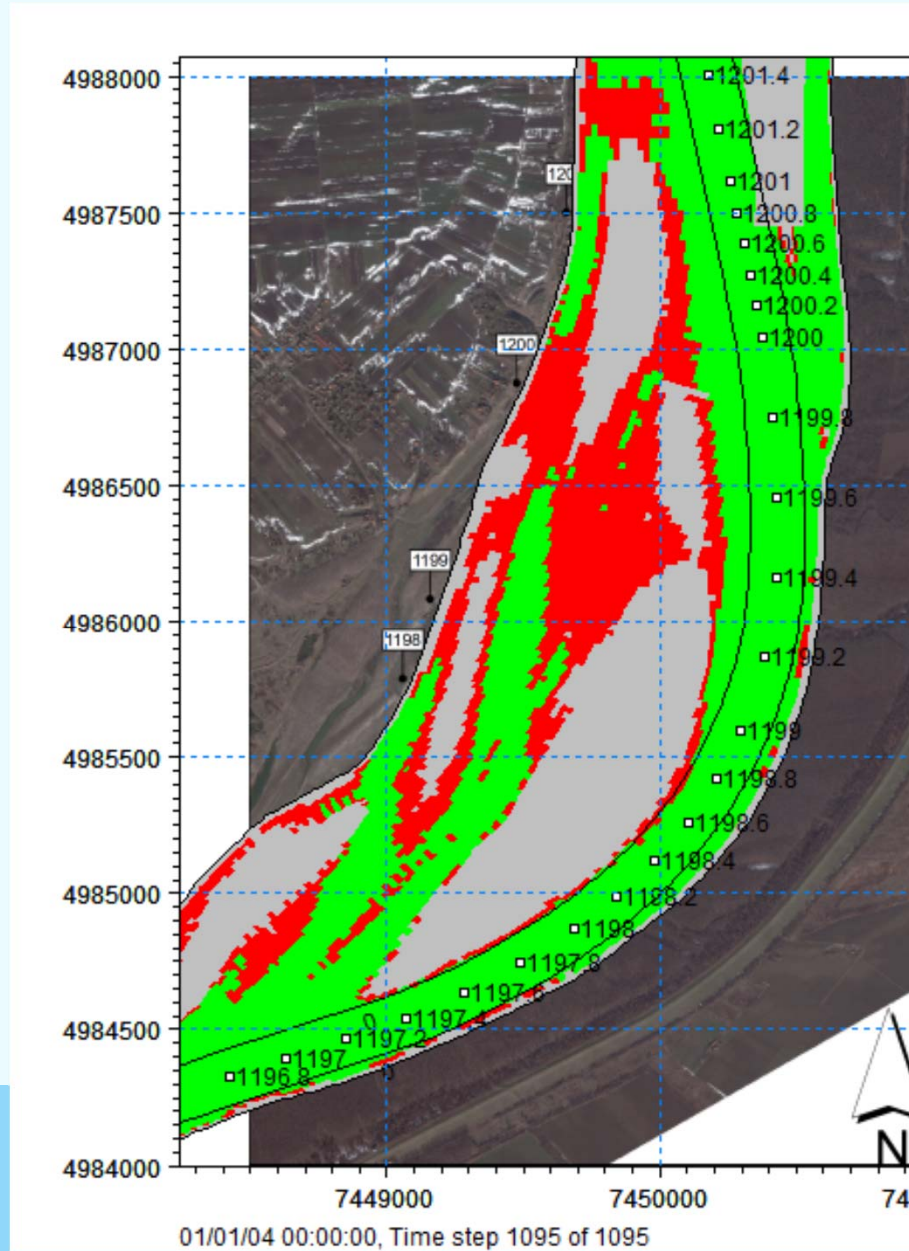
24. Preliv- existing situation



24. Preliv- simulations



24. Preliv- simulations



24. Preliv– conclusions

- 2 chevrons are build to prevent the side channel from becoming dominant which unfavourable
- Upstream chevron is placed to “lock” the existing sand bar
- Downstream chevron prevents flow shortcutting
- Sand bars will appear behind the chevrons

Thank you for your kind attention

